



AGENDA (13:30-16:00) :

- Presentation Round
- Report WP1 (Coordination & Dissemination). Aalto University (5-10 minutes)
- TOPIC1: Situation in each Geographical Area (level of implementation of WPs)
 - Report WP5 (Coordination & Dissemination). UNIBO (10 minutes)
 - Report WP4 (Coordination & Dissemination). UPV (10 minutes)
 - Report WP3 (Coordination & Dissemination). WUR (10 minutes)
 - Report WP2 (Coordination & Dissemination). Aalto University (10 minutes)
- TOPIC2: Final Agreements in Local Networks + Joint Final Deliverables (to be discussed in the International Workshop3 (Bologna))
- TOPIC3: Final Seminar of the AELCLIC project in Bologna (November 2019) + International Workshop3
- TOPIC5: Budget and Administrative Issues

Presentation Round

9 partners (all CLIMATE-KIC partners)

- **P279 Aalto University: *Juanjo Galan***
- **P018 Wageningen University: *Bas Pedroli***
- **P066 Universitat Politècnica de València: *Francisco Galiana & Emilio Ser'vera***
- **P125 - Alma Mater Studiorum - Università di Bologna: *Daniele Torregianni & Ludovica Marinaro***
- **P315 - City of Helsinki: *Susanna Kankaanpaa***
- **P414 - Provincie Zuid-Holland: *Isolde Somsen***
- **P219 - Las Naves: *Julian Torralba***
- **P114 - Comune di Bologna: *Giovanni Fini***
- **P291 - Fondazione per l'Innovazione Urbana: *Valeria Barbi***

11 Third Parties (+...): European and regional/local support to create Consortia

- UNISCAPE (Network of European Universities): *Tessa Matteini / Juanma Palermo*
- CIVILSCAPE (Network of European Civil organizations): *Dirk Gotzmann / Carla Goncalves*
- **Landscape Observatory of Finland: *Juanjo Galan / Mikko Häro***
- Landscape Observatory of the Canary Islands: *Juanma Palermo*
- Landscape Observatory of Catalonia: *Pere Sala*
- Landscape Observatory of the Netherlands: *Gerrit-Jan van Herwaarden*
- University IUAV di Venezia: *Anna Marson*
- University of Porto: *Carla Goncalves*
- **National University Ireland Galway: *Kevin Lynch***
- PIANTE FARO: *Mario Faro*
- EURODITE: *Joep de Roo / Cristiana Stoian*

Report WP1 (Coordination & Dissemination).

AELCLIC PATHFINDER (Partners & Third parties; Pilot Landscapes)

AELCLIC partners

- Academic
- Regions / Cities
- NGOS
- Business

AELCLIC third parties

- Academic
- Regions / Cities
- NGOS
- Business

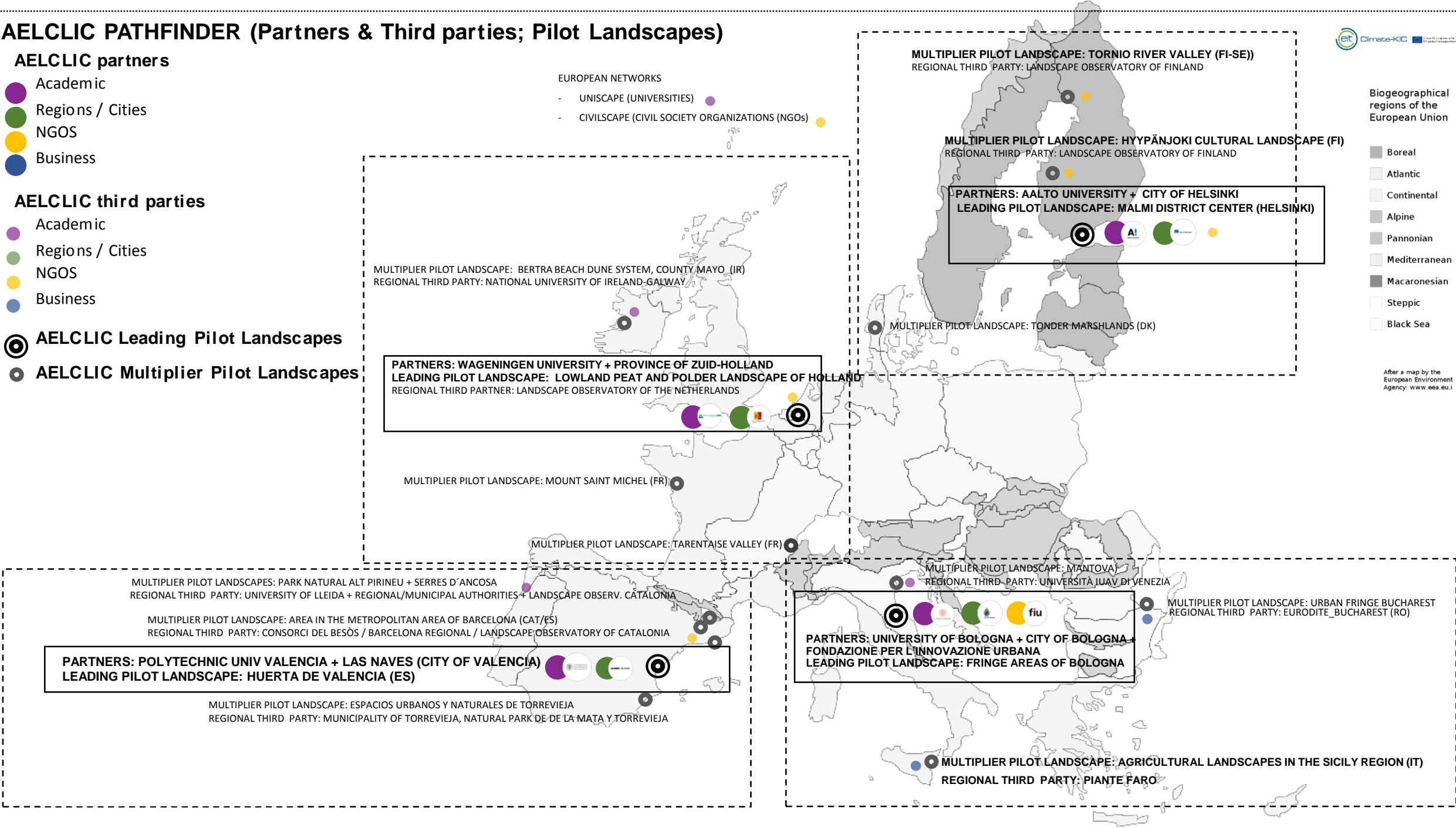
AELCLIC Leading Pilot Landscapes

AELCLIC Multiplier Pilot Landscapes

EUROPEAN NETWORKS

- UNISCAPE (UNIVERSITIES)
- CIVILSCAPE (CIVIL SOCIETY ORGANIZATIONS (NGOs))

- Boreal
- Atlantic
- Continental
- Alpine
- Pannonian
- Mediterranean
- Macaronesian
- Steppe
- Black Sea



AELCLIC_PATHFINDER_Milestone Meeting 3 (AG3)_26.9.2019

	WORKSHOP1 "Who" Local Network & Work-Plan	WORKSHOP2 "What for" Co-identification of impacts and opportunities	WORKSHOP3 "How" Co-definition of key contents for a LACAP
MALMI (HELSINKI)	10.5.2019 (REPORTED)	12.6.2019 (REPORTED)	29.8.2019
HYYPÄJOKI VALLEY	26.4.2019 (REPORTED)	14.6.2019 (REPORTED)	6.9.2019
TORNIO RIVER VALLEY	24.5.2019 (REPORTED)	30.8.2019	8.10.2019
TØNDER MARSHLANDS			
Lowland Peat and Polder Landscape of Holland			
BERTRA DUNE SYSTEM	7.5.2019 (REPORTED)		1.10.2019
HAUTE TARENDAISE	8.10.2019		21.10.2019
MONT SAINT MICHEL			
HUERTA DE VALENCIA	17.6.2019 REPORTED)		17-22.10 (to be confirmed)
RIVER BESÒS (METROPOLITAN AREA OF BARCELONA)	2.10.2019		29-31.10 (to be confirmed)
SERRES D'ANCOSA	8.10.2019		1st week of November (to be confirmed)
PARC NATURAL ALT PIRINEU	4.10.2019		1st week of November (to be confirmed)
PARQUE NATURAL LAGUNAS DE LA MATA Y TORREVIEJA?	25.9.2019		23.10.2019
URBAN FRINGE CITY OF BOLOGNA	16.5.2019 (REPORTED)		18.9.2019 (REPORTED)
CITY OF MANTOVA	13.5.2019 (REPORTED)	16.7.2019 (REPORTED)	
Carol Park and the Filaret-Rahova neighborhood (Bucharest)	4.7.2019 (REPORTED)		
ETNA LANDSCAPES	14.7.2109 (REPORTED)		

AELCLIC_PATHFINDER_Milestone Meeting 3 (AG3)_26.9.2019

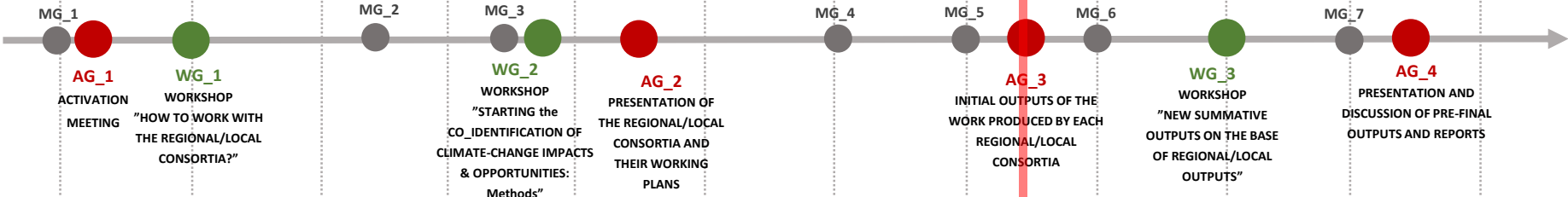
15th FEBRUARY Kick-off 15 MARCH 15 APRIL 15 MAY 15 JUNE 15 JULY 15 AUGUST 15 SEPTEMBER 15 OCTOBER 15 NOVEMBER 15 DECEMBER END



COORDINATION & MANAGEMENT (WP1)

Management Group (MG): all the partners of the project
Advisory Board (AB): all the third parties

- MG_x: Regular On-line meeting of the MG
- WG_x: Workshop meeting (face to face) of the MG
- AG_x: Milestone On-line meeting of the MG + AB



IMPLEMENTATION OF THE PROJECT (WP1, 2, 3, 4, 5)

- PO_x Partial OUTPUT in LEADING PILOT / in MULTIPLIER PLOT
- PD_x Partial DELIVERABLE in LEADING PILOT/ in MULTIPLIER PILOT
- FO_y Final OUTPUT
- FD_y Final DELIVERABLE

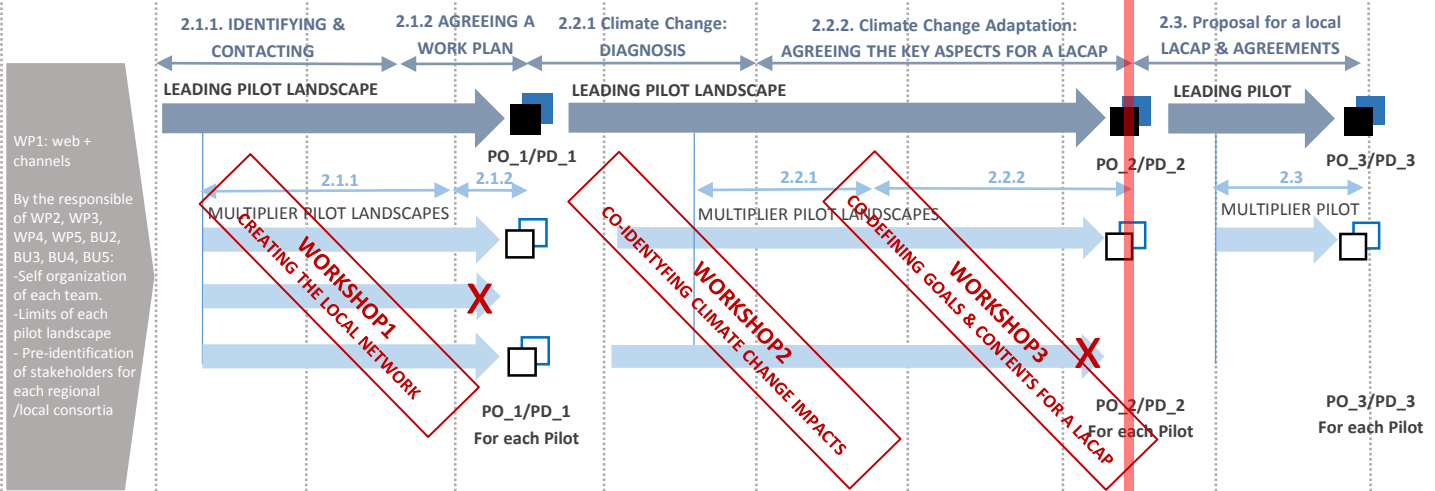
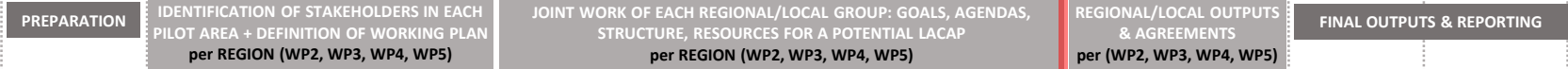
Partial outputs/deliverables:

- (X = 1): Consortium and Working Plan for each Pilot Landscape
- (X = 2): Draft Structure and Implementation Plan for a LACAP (per Consortium & Pilot)
- (X = 3): Final Structure and Implementation Plan for a LACAP (per Consortium & Pilot)

Final outputs/deliverables:

- (Y = 1): Compilation of Final Partial Outputs / Deliverables
- (Y = 2): New outputs and deliverables produced after the joint and critical analysis of the final results in each Pilot Landscape
- (Y = 3): Guidelines for the constitutions of regional/local Consortiums
- (Y = 4): Climate-KIC REPORTS (Performance report, financial report, etc.)
- (Y = 5): web with all the deliverables

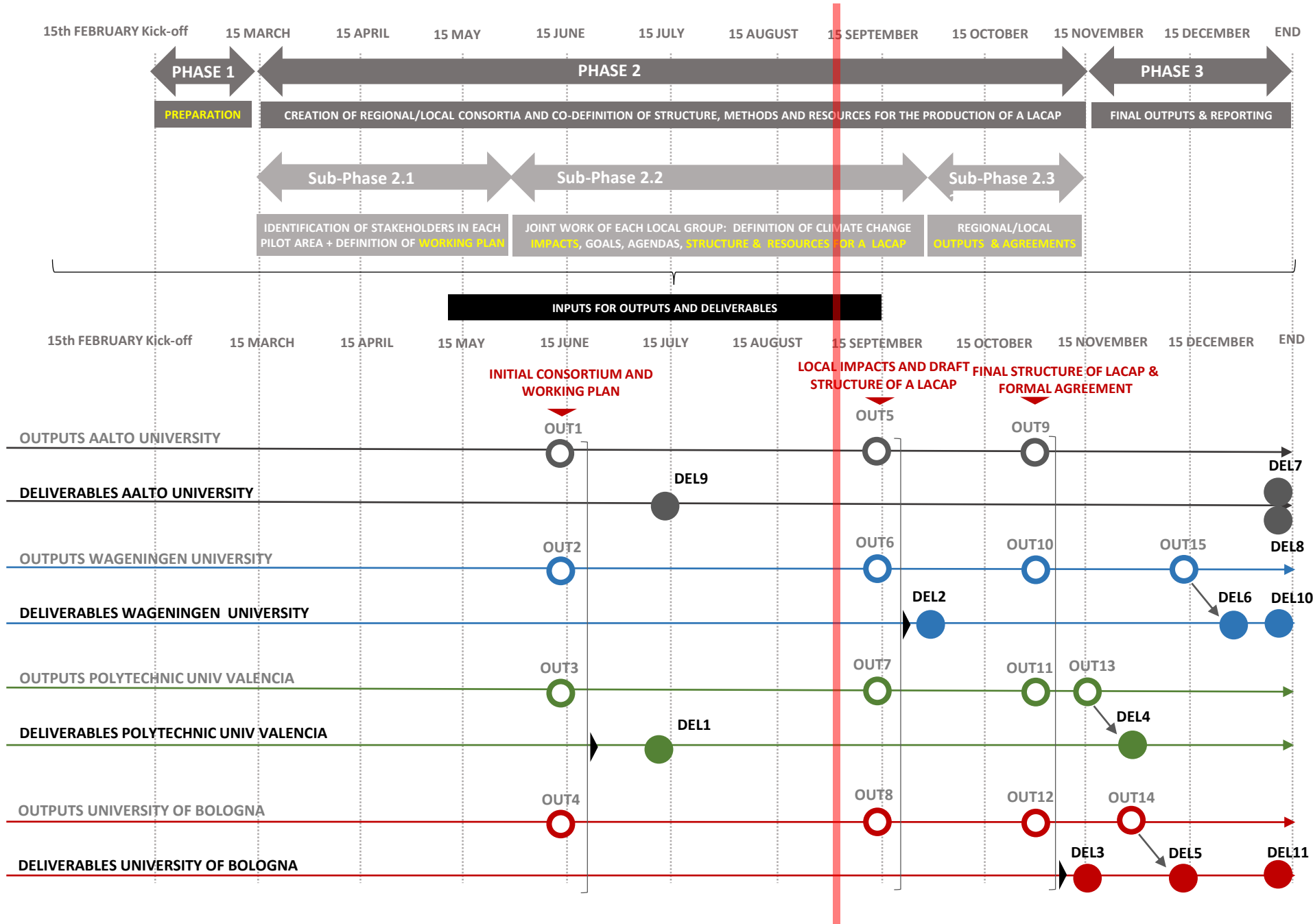
NOTE_ All the deliverables will be displayed in the web and disseminated by the partners



Compilation of Final Partial Outputs / Deliverables
New outputs and deliverables produced after the joint and critical analysis of the final results
Guidelines for the constitutions of regional/local Consortiums
Climate-KIC REPORTS

- FO_1 / FD_1
- FO_2 / FD_2
- FO_3 / FD_3
- FD_4
- FD_5

LOGIC MODEL_AELCLIC PATHFINDER_SCHEDULE FOR THE FINALIZATION OF OUTPUTS AND DELIVERABLES



- OUT1 CONSORTIUMS AND WORKING PLANS FOR EACH PILOT LANDSCAPE IN NORTHERN EUROPE
- OUT2 CONSORTIUMS AND WORKING PLANS FOR EACH PILOT LANDSCAPE IN ATLANTIC AND ALPINE EUROPE
- OUT3 CONSORTIUMS AND WORKING PLANS FOR EACH PILOT LANDSCAPE IN SOUTH-WESTERN EUROPE
- OUT4 CONSORTIUMS AND WORKING PLANS FOR EACH PILOT LANDSCAPE IN SOUTH-EASTERN EUROPE
- OUT5 DRAFT STRUCTURE AND IMPLEMENTATION PLAN FOR A FUTURE LACAP (PER CONSORTIUM & PILOT) IN NORTHERN EUROPE
- OUT6 DRAFT STRUCTURE AND IMPLEMENTATION PLAN FOR A LACAP (PER CONSORTIUM & PILOT) IN ATLANTIC AND ALPINE EUROPE
- OUT7 DRAFT STRUCTURE AND IMPLEMENTATION PLAN FOR A FUTURE LACAP (PER CONSORTIUM & PILOT) IN SOUTH-WESTERN EUROPE
- OUT8 DRAFT STRUCTURE AND IMPLEMENTATION PLAN FOR FUTURE LACAP (PER CONSORTIUM & PILOT) IN SOUTH-EASTERN EUROPE
- OUT9 FINAL STRUCTURE AND IMPLEMENTATION PLAN FOR A FUTURE LACAP (PER CONSORTIUM & PILOT LANDSCAPE) IN NORTHERN EUROPE
- OUT10 FINAL STRUCTURE AND IMPLEMENTATION PLAN FOR A FUTURE LACAP (PER CONSORTIUM & PILOT LANDSCAPE) IN ATLANTIC AND ALPINE EUROPE
- OUT11 FINAL STRUCTURE AND IMPLEMENTATION PLAN FOR A FUTURE LACAP (PER CONSORTIUM & PILOT LANDSCAPE) IN SOUTH-WESTERN EUROPE
- OUT12 FINAL STRUCTURE AND IMPLEMENTATION PLAN FOR A FUTURE LACAP (PER CONSORTIUM & PILOT LANDSCAPE) IN SOUTH-EASTERN EUROPE
- OUT13 COMPILATION OF FINAL PARTIAL OUTPUTS OUT1-OUT12
- OUT14 NEW FINDINGS PRODUCED AFTER THE JOINT AND CRITICAL ANALYSIS OF THE FINAL RESULTS IN EACH PILOT LANDSCAPE AND IN THE WHOLE NETWORK
- OUT15 GUIDELINES FOR THE CONSTITUTIONS OF REGIONAL/LOCAL CONSORTIUMS FOR THE DEFINITION OF LANDSCAPE-CLIMATE CHANGE ADAPTATION PLANS
- DEL1 EDITED AND IMPROVED COMPILATION OF PARTIAL OUTCOMES FROM THE DIFFERENT GEOGRAPHICAL ZONES (OUT1, 2, 3 AND 4)
- DEL2 EDITED AND IMPROVED COMPILATION OF PARTIAL OUTCOMES FROM THE DIFFERENT GEOGRAPHICAL ZONES (OUT5, 6, 7 AND 8)
- DEL3 EDITED AND IMPROVED COMPILATION OF PARTIAL OUTCOMES FROM THE DIFFERENT GEOGRAPHICAL ZONES (OUT9, 10, 11 AND 12)
- DEL4 EDITED AND IMPROVED COMPILATION OF FINAL PARTIAL DELIVERABLES (DEL1+DEL2+DEL3)
- DEL5 EDITED AND IMPROVED PRESENTATION OF THE NEW FINDINGS PRODUCED AFTER THE JOINT AND CRITICAL ANALYSIS OF THE FINAL RESULTS IN EACH PILOT LANDSCAPE AND IN THE WHOLE NETWORK
- DEL6 FINAL GUIDELINES FOR THE CONSTITUTIONS OF REGIONAL/LOCAL CONSORTIUMS FOR THE DEFINITION OF LANDSCAPE-CLIMATE CHANGE ADAPTATION PLANS
- DEL7 CLIMATE-KIC REPORTS (PERFORMANCE REPORT, FINANCIAL REPORT, ETC.)
- DEL8 WEB WITH ALL THE DELIVERABLES
- DEL9 SCIENTIFIC ARTICLE OR CONFERENCE PAPER: IDENTIFYING AND ALIGNING AGENDAS FOR MULTI-STAKEHOLDER CONSORTIA ON CLIMATE CHANGE ADAPTATION & MITIGATION
- DEL10 SCIENTIFIC ARTICLE OR CONFERENCE PAPER: SETTING MULTI-STAKEHOLDER CONSORTIA ON CLIMATE CHANGE ADAPTATION & MITIGATION: MODELS FROM THE AELCLIC PROJECT
- DEL11 SIGNED AGREEMENTS FOR A JOINT COMMITMENT OF PARTNERS IN THE ESTABLISHED LOCAL CONSORTIA

Budgets, Eligible Costs & Protocols (report hours and keep receipts of all the costs)

Be in contact with the Controller from your Department or Institution

Reporting: Use logos and use the templates that will be provided by Aalto University for the partial and final deliverables

BUDGET OVERVIEW - COSTS 2019

EIT Climate-KIC Partner	Cost of other goods and services	Indirect costs at flat rate	Personnel costs	Travel and subsistence	Total
P018 Wageningen University	€ 4,500.00	€ 7,375.00	€ 19,000.00	€ 6,000.00	€ 36,875.00
P066 Universitat Politècnica de València	€ 2,000.00	€ 4,000.00	€ 10,500.00	€ 3,500.00	€ 20,000.00
P125 Alma Mater Studiorum - Università di Bologna	€ 2,000.00	€ 4,375.00	€ 10,900.00	€ 4,600.00	€ 21,875.00
P219 Fundación de la Comunidad Valenciana para la Promoción Estratégica, el Desarrollo y la Innovación	€ 3,000.00	€ 1,000.00	0	€ 1,000.00	€ 5,000.00
P279 AALTO-KORKEAKOULUSÄÄTIÖ	€ 5,500.00	€ 7,250.00	€ 17,015.00	€ 6,485.00	€ 36,250.00
P291 Fondazione per l'Innovazione Urbana	€ 2,500.00	€ 1,000.00	€ 1,000.00	€ 500.00	€ 5,000.00
Project Costs	€ 19,500.00	€ 25,000.00	€ 58,415.00	€ 22,085.00	€ 125,000.00

NOTE: WP leaders might make transfer from one budget line to another after consulting their controllers and Aalto University. E.g. If personnel costs are reduced, the budget for travel and accommodation of for goods and services might be increased accordingly

Please include here your estimated costs until the end of the project (considering all the implemented and expected workshops and your personal participation in the final meeting in Bologna). Remember that the WP4 includes the budget of Las Naves and the WP5 the budget of FIU				
	Other Goods and Services	Personnel Costs	Travel and Subsistance for the AELCLIC_partners (universities and our partner cities/regions)	
WP1 (Aalto)_EXPECTED	1 500,00 €	2 000,00 €		
WP1 (Aalto)_ALLOWED	1 500,00 €	2 000,00 €		
WP1 (Aalto)_BALANCE	0,00 €	0,00 €	0,00 €	
WP2 (Aalto)_EXPECTED	2 000,00 €	15 015,00 €	4 500,00 €	
WP2 (Aalto)_ALLOWED	4 000,00 €	15 015,00 €	6 485,00 €	
WP2 (Aalto)_BALANCE	2 000,00 €	0,00 €	1 985,00 €	
WP3 (WUR)_EXPECTED	1 000,00 €	19 000,00 €	5 000,00 €	
WP3 (WUR)_ALLOWED	4 500,00 €	19 000,00 €	6 000,00 €	
WP3 (WUR)_BALANCE	3 500,00 €	0,00 €	1 000,00 €	
WP4 (UPV)_EXPECTED	1 555,33 €	10 500,00 €	4 611,00 €	
WP4 (UPV)_ALLOWED	5 000,00 €	10 500,00 €	4 500,00 €	
WP4 (UPV)_BALANCE	3 444,67 €	0,00 €	-111,00 €	
WP5 (UNIBO)_BALANCE	2 485,00 €	6 525,00 €	3 505,00 €	
WP5 (UNIBO)_ALLOWED	4 500,00 €	11 900,00 €	5 100,00 €	
WP5 (UNIBO)_BALANCE	2 015,00 €	5 375,00 €	1 595,00 €	
OVERALL BALANCE	10 959,67 €	5 375,00 €	4 469,00 €	20 803,67 €

TOPIC1: Situation in each Geographical Area (level of implementation of WPs)

WP5_SOUTH-EASTERN EUROPE
(UNIBO)

15th FEBRUARY Kick-off 15 MARCH 15 APRIL 15 MAY 15 JUNE 15 JULY 15 AUGUST 15 SEPTEMBER 15 OCTOBER 15 NOVEMBER 15 DECEMBER END

University of Bologna
Workplan
OUTPUT 4

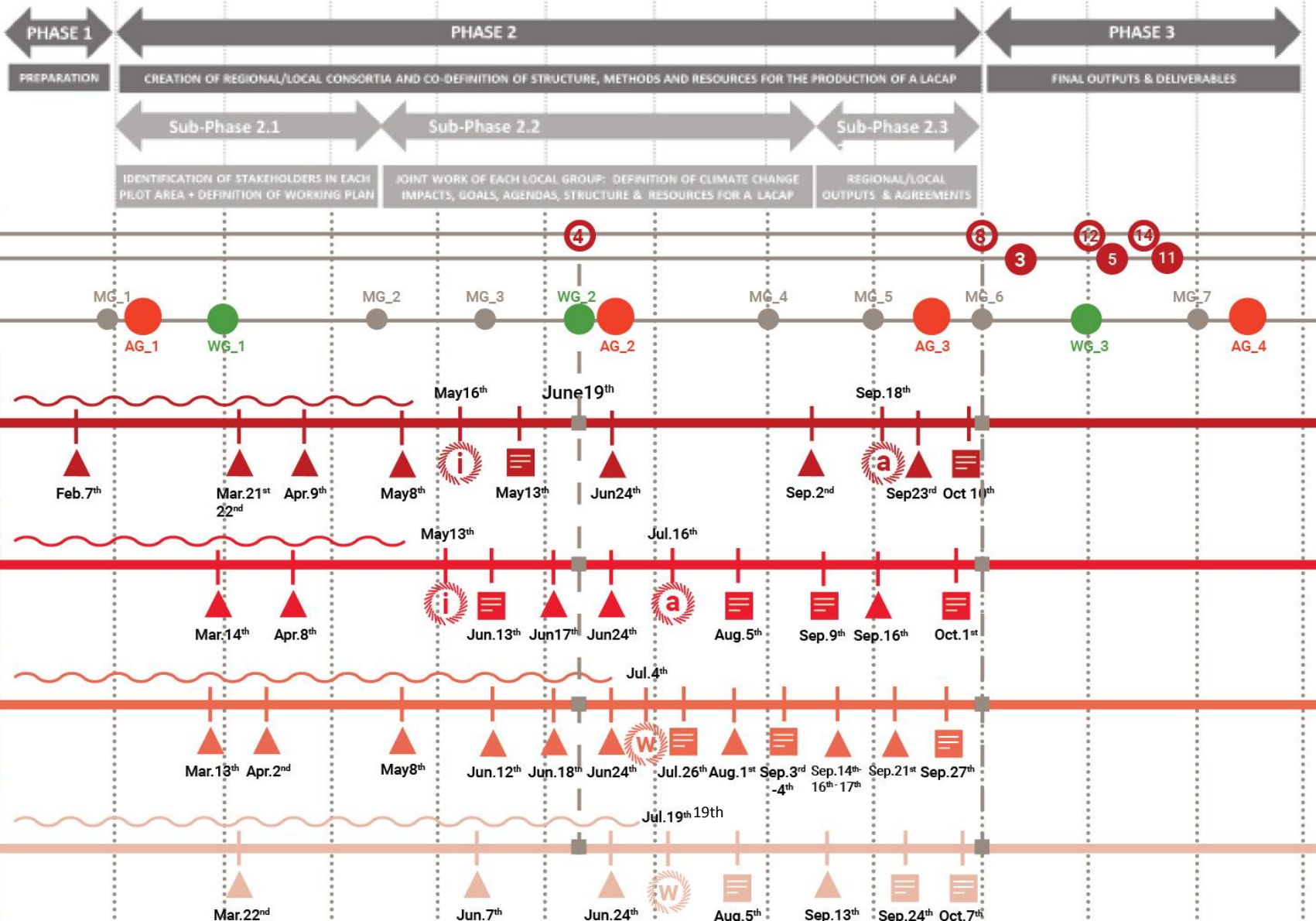
outputs & deliverables
coordination & management

Leading landscape
Bologna

Multiplier Landscape
Mantova

Multiplier Landscape
Bucharest

Multiplier Landscape
Etna
Landscapes





Laeding pilot Landscape Bologna

Local Regional Administration

- ★ Giuseppe de Togni
Municipality of Bologna
- ★ Marco Alberghini
UGC CISL B. Metropolitan area

National / Local Bodies

- ★ Marco Caliceti
Confagricoltura Bologna
- Claudio Cervellati,
Confagricoltura Bologna Emilia Romagna
- Carmine Preziosi ANCE Bologna
- C.Cavallina - Coldiretti Bologna
- Private sector and companies
- Marco Odaldi AESS
- Francesco Palmieri Bologna Welcome

- Andrea Bruini
Granarolo Group
- ★ Silvia Bergami e Stefano Savini,
EmilBanca
- ★ Marco Spinetti Interporto Bologna
- CAAB; Orogel; Inalca

Societal Group

- S. Borsari Quartiere S.Donato-S. Vitale
- ★ Michele Solmi e Andrea Morsolin,
Consorzio Bonifica Renana
- ★ Choly Vladimis
Agenzia di sviluppo Pilastro
- ★ Patrizia Preti,
Orti di Via Salgari, ANCESCAO

Foundations / Research institutes

- FICO FOUNDATION
- ★ Julia Colver
Nomisma

The selection of the stakeholders followed a priority criterion of representativeness of the various sectors that make up the local context, such as: Public institutions, Private companies and social, cultural associations - NGOs . The workshop is attended also by stakeholders who live and work in the pilot territory but also other bodies operating on a larger scale.

Multiplier Landscape Mantova

Local Regional Administration

- ★ G. Montanarini, S. Savazzi, E. Parisi, M. Bedini, G. Moraschi, M. Ghidoni, I. T. Silvestrin, F. Paini, S. Salardo, R. Marchioro, M. Busi
Municipality of Mantova

- ★ Stefano Pasquali, Renzo Bonatti
Province of Mantova

Luisa Pedrazzini
Lombardy Region

National / Local Bodies

- ★ Edoardo Tolasi, Marco Goldoni
Agronomist Association Mantova
- ★ Cristiano Guarnieri
Architects Professional Association MN

Private sector and companies

- ★ Simone Massari
Mantova Ambiente, Gruppo TEA Spa
- ★ Sandro Sutti,
Labter Crea Mantova
- ★ Monica Viviani
Gazzetta di Mantova
- ★ Fausto Uguzzoli, Romeo Broglia
Aerodron S company

Societal Group

- ★ Barbara Schiavinato
Land reclamation consortium of the Mincio area

Foundations / Research institutes

- ★ Cristina Alinovi,
Centro Studi PIM
- ★ A. Marson, F. Musco, D. Maragno
IUAV University of Venice

Multiplier Landscape Bucharest

Local National Administration

Sergiu Cruceanu
Ministry of Environment & Climate Change

National / Local Bodies

Irina Leca
National institute, Arche

Private sector and companies

- ★ Joep de Roo, Cristiana Stoian
EURODITE
- Cornel Lazar and Alexandru Tararescu,
Hesper company
- Miruna Draghia
Urbasofia (urban planning company)

Societal Group

Marta Tanase
Let's do it Romania NGO

Anca Burcus
Fundatia Simetria NGO, PhD student

Lavinia Andrei
Terra Millenul III

Iulia Laura Vasile
Architect, citizen

Miruna Trica,
Carol Park Area NGOs

Foundations / Research institutes

Adelina Stanoiu
Physics Institute

Sorin Marin
National Astronomical Institute



Multiplier Landscape Etna Landscapes

Local Regional Administration

- ★ A.Raciti, M. Cannavò, C. Mirabella
Regione Sicilia, Assessorato Cultura

Barbara Mirabella
Assessorato Cultura Comune di Catania

Lara Riguccio
Ecologia e Ambiente Comune di Catania

National / Local Bodies

- ★ Ignazio Lutri InArch Sicilia
Coldiretti Sicilia
- Antonella Mandalà FAI Catania
- Sandro Di Bella and Alfredo Tamburino
Legambiente Catania;

Antonia Mondello Italia Nostra Messina

Private sector and companies

- Virginia Borghese
Giardino di Villa Borghese;
Giardino della Kolimbetra;
- Francesco Ferreri: Donnafugata;
- ★ Michele Germanà
Agenzia per il Mediterraneo;
- Le stanze In fiore;
- Gian Pietro Giusso
Orto Botanico di Catania

Societal Group

- ★ Giovanna Cosentino, M. Carmela Vagliasindi
Etna Garden Club;
- Ildo Tomassetti Flora Bombarda Garden Club

- ★ Luca Recupero
Associazione Musicale Etna

Foundations / Research institutes

- ★ Giusi Monti, Sergio Cumitini
Fondazione Radice Pura
- ★ Fondazione Piccolo di Calanovella

Towards the LACAP

Contribution related to a future project for the definition of
a Landscape Adaptation Plan to Climate Change

Bologna_18.09.2019
2nd workshop | LACAP structure

20 participants

AGENDA

3.30 – 3.40 p.m. | Welcoming speech and synthesis of the first workshop's results

3.40 – 4.30 p.m. | PHASE ONE: Implementing the impact diagnosis: definition of the hierarchy of climate change impacts in the various areas of the pilot area.

- The first group work: identify the relevance attributed by stakeholders to the various impacts of climate change on the different homogeneous areas of the pilot area
- Illustration of a synthetic characterization of the pilot landscape
- The second group work: identify the relevance attributed by stakeholders to the various impacts of climate change on the various structural landscape units of the pilot area.

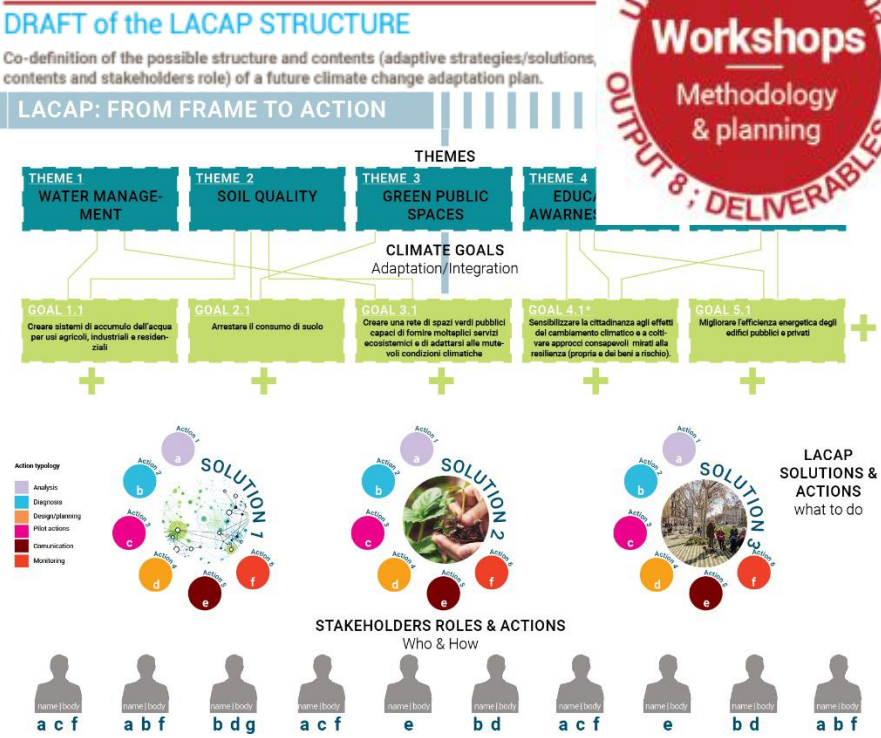
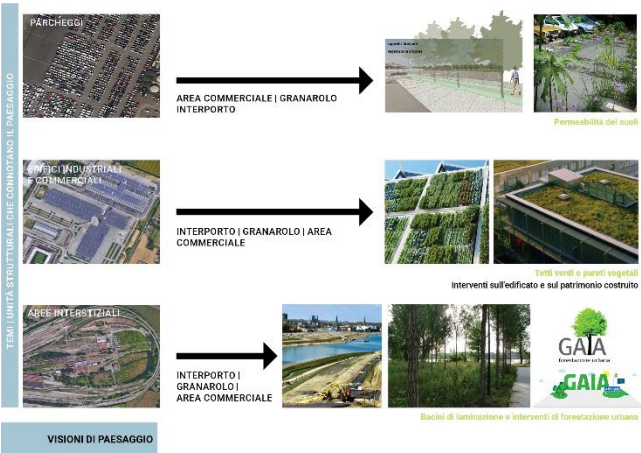
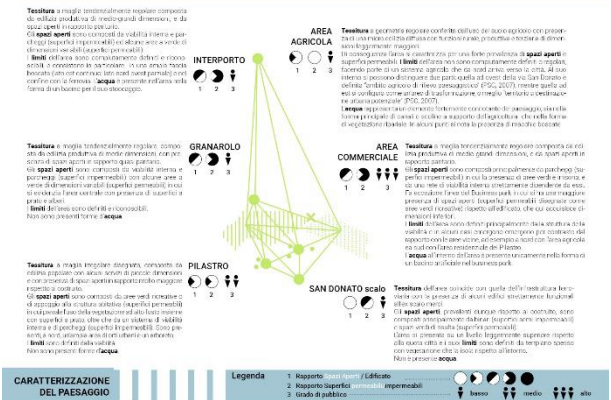
4.30 – 5.30 p.m. PHASE TWO - Suitable adaptation solutions for the pilot area

- Illustration of projects and programs carried out at local and international level that could be configured as adaptation solutions to be applied to the various structural units of the pilot landscape. Link and relations with existing local/regional plans.
- Third group work carried out on cartographic support, aimed at mapping and outlining desirable strategies, solutions, opportunities and projects for adapting the pilot landscape to climate change.

5.30 - 6.30 p.m. PHASE THREE - THEMES, OBJECTIVES AND ACTIONS of the plan for the adaptation of the pilot area to the CC and ROLES of the stakeholders

- Brief illustration of group work for defining the structure and contents of the Plan.
- Focus group with all stakeholders to: Share the structure of the future LACAP; Co-identify the contents of the various parts of the Plan: THEMES, OBJECTIVES, SOLUTIONS, ACTIONS and ROLES of the stakeholders;

6.30 Closing of the works and networking cocktail



Towards the agreement

Potential contribution related to a future project for the definition of a Landscape Adaptation Plan to Climate Change

- Territory Analysis (Data/knowledge);
- Data and knowledge, raising awareness and dissemination in the agricultural world;
- Supply of historical data on crops and irrigation. CAP data;
- Study of impacts on the energy front;
- Community awareness;
- Constructive Support in identifying building and infrastructure solutions to respond to environmental and functional problems;
- Contribute with analysis results to pilot projects on mobility, water, waste;
- Triggering virtuous processes for circular economy;
- Sharing of the experience gained in environmental assessment and certification;
- Networking and involving other actors also for potential regeneration projects;
- Promoting internal/external awareness and dissemination through the own business, financial and entrepreneurial network.

Towards the LACAP

Contribution related to a future project for the definition of
a Landscape Adaptation Plan to Climate Change

Mantova_16.07.2019
2nd workshop LACAP structure

16 participants



AGENDA:

3.00-3.15 p.m. The AELCLIC project: towards a Landscape adaptation plan to climate Change, the second Workshop.

- Opening welcome, brief presentation of the project and presentation of the agenda
- Summary of the results of the 1st workshop
- The stakeholders introduce themselves

3.15 – 4.00 p.m. | Changing landscapes and shared strategies to inhabit them.

Implementation of the results of the first workshop, both for the diagnosis of the impacts of climate change on the landscape, and for the future definition of the plan for adapting the landscape to climate change.

- Coding and mapping of climate change impacts on the pilot area, understanding their potential effect on the landscape. The group work has been based on some thematic maps illustrating some of the main effects of climate change detected during the first workshop (eg. Temperature rise and heat waves - See the report of the first workshop).
- Definition of adaptation opportunities and strategies, also referring to the different types of urban areas.

4.00 – 5.15 p.m. | The future Plan: Content and structure.

- Open discussion focused on the co-definition of the possible structure and contents of the future LACAP. The project activities, benefitting of the previous work carried out in the pilot area by the city of Mantova and IUAV, aim at creating added-value by co-defining the contents of a future Landscape Climate-Change Adaptation Plan, intended as a systemic and cross-sector document lending support to spatial and sector planning, also based on some examples and best practices in the international context.

5.15 – 6.00 p.m. | A roadmap for the plan.

Since the goal of the project is the creation of “regional/local consortia with the social, financial, administrative and technical capacity to co-define in the future Landscape Adaptation Plans to Climate Change”, this last part is aimed at defining what will be needed to create the plan in terms of knowledge, activities and resources (already available or to be acquired), as well as at exploring how the future plan may be connected to spatial and land use plans and other sector plans.

6.00 p.m. | Closure

Increased temperatures;
Heat waves;
Air quality;
Extreme events; Flooding;
Water scarcity;
Invasion of alien species;
Eutrophication of lakes;
Increasing number of insects
and seasonal allergies;
Wind gusts;
Hydrogeological instability;
Negative impacts on
tourism industry.



Draft contents of the LACAP

- The institutional and regulatory framework
 - Agreements with the authorities responsible for territorial governance and landscape protection.
 - Integration and complementarity with existing plans and instruments.
- Systemic actions on a broad territorial scale
 - Strengthening the ecological network
 - Urban regeneration and green systems
 - Promote a conscious and sustainable water management
 - Promote sustainable land use
- Systemic actions on the urban scale
 - Work on public space to increase resilience
 - Rethink urban mobility with greater regard to public mobility.
- Systemic actions on the built heritage
 - Promote targeted actions on the built heritage.
- Awareness raising, education and communication.



University of Bologna
workshops
Bucharest
1st workshop
OUTPUT 8

Towards the LACAP

Contribution related to a future project for the definition of
a Landscape Adaptation Plan to Climate Change

Bucharest_04.07.2019

1st workshop impact diagnosis

11 participants



AGENDA:

Bucharest workshop Agenda
July 4, 2019 – 9.30 am – 13.30 pm

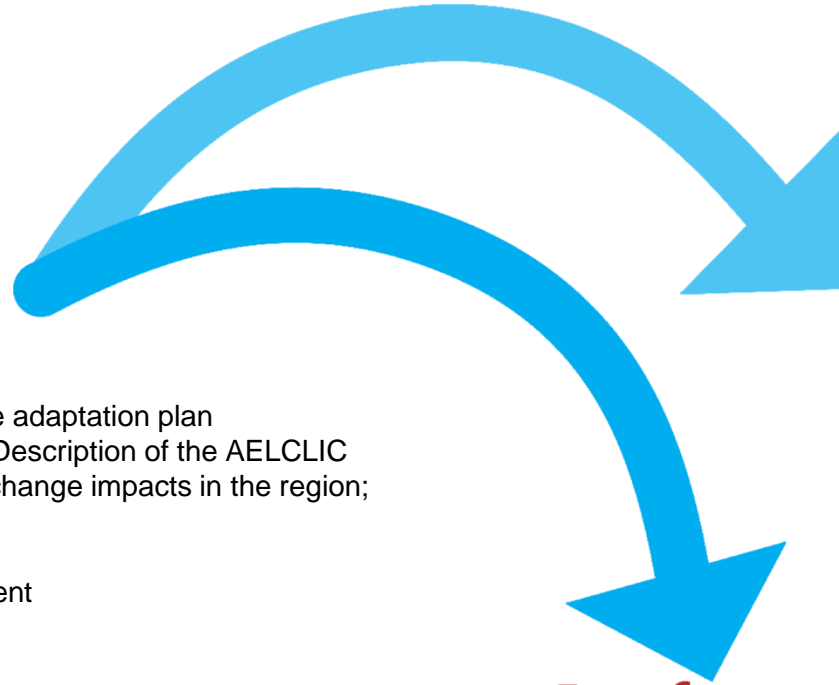
09.30 - 10.15 | The AELCLIC project: Towards a climate change adaptation plan
Daniele Torreggiani, University of Bologna: Opening welcome, Description of the AELCLIC project, Work-plan and activities in the pilot area, Main climate change impacts in the region; Presentation of the pilot area:
Joep Erik De Roo, Eurodite: Cultural heritage of area
Miruna Draghia, Urbasofia: spatial planning/planned development
Anca Burcus, Fundatia Simetria: Landscape analysis

10.15 - 11.15 | Changing Landscapes: Perceived impacts on local territories.
Group work on climate impacts, heritage values and urban planning aspects of the park
Participants work on the diagnosis of critical issues and impacts related to climate change, describing the already tangible and predictable consequences they notice or experience in the pilot area. Impacts are visualized and mapped in real time.

11.30- 12.15 | Envisioning landscape to nourish the future plan.
Brainstorming based on the results of the diagnosis of the first part of the morning. The stakeholders are invited to reflect on the possible adaptation solutions that could be implemented in the specific context, on the objectives that the adaptation plan should take and on the themes and contents that the plan should deal with.

12.15 - 13.00 | Building the AELCLIC's local network.
Plenary discussion: each stakeholder is invited to discuss about the opportunities that can derive from a network collaboration between various local players, in terms of role and contribution in a future project that take care of creating an adaptation plan for the local landscape.

13.00 - 13.30 | A ROAD MAP for AELCLIC plan. Conclusions of the workshop.



IMPACT diagnosis

- Heat waves;
- Increased temperatures;
- Extreme events;
- Sudden events;
- Air Pollution;
- Water scarcity;
- Seasons change & loss of seasonality;
- Tropicalization
- Soil impermeability
- Loss of Fauna;
- Birds proliferation

Draft contents of the LACAP

- Raise awareness activities;
- Promote the natural heritage values protection;
- Provide actions to make ecosystem in balance;
- Improving alternative and sustainable mobility in the city;
- Foster the soft mobility & creation of network of public spaces;
- Foster the integration of renewable energy solutions in the city
- Foster the energy efficiency of the built heritage;
- Create green roof demonstrator projects in the neighborhood;
- Improve the attractiveness of the Park;
- Turn the Carol Park into a flagship hub of innovation in the climate change and sustainability domains
- Retention solutions for water;
- Need for storytelling to improve the park sensory perception;
- Monitoring activity on the quality of air, the vegetation status, social uses and perception , ...;
- Connection with spatial and landscape planning tools

Towards the LACAP

Contribution related to a future project for the definition of
a Landscape Adaptation Plan to Climate Change

Etna landscapes_19.07.2019
1st workshop impact diagnosis

10 participants



9:45 - 10:30 a.m. | The AELCLIC project: towards a landscape adaptation plan to climate change

Introduction and presentation of the AELCLIC project

- Opening welcome and presentation of the organization of the afternoon's work
- Presentation of the AELCLIC project and workplan
- Climate change trends in a nutshell
- The stakeholders introduce themselves
- Presentation of the pilot area

10.30 - 11:45 a.m. | Changing landscapes. Perceived impacts on local plan.

Group work to assess the existing and most perceived impacts of climate change on the pilot area. Participants work on the diagnosis of critical issues and impacts related to climate change (guiding themes: extreme events, drought, desertification, temperature increase), describing the already tangible and predictable consequences they notice or experience in the pilot area. Impacts are visualized and mapped in real time.

11:45 a.m. – 1:00 p.m. | Visions to nourish the plan.

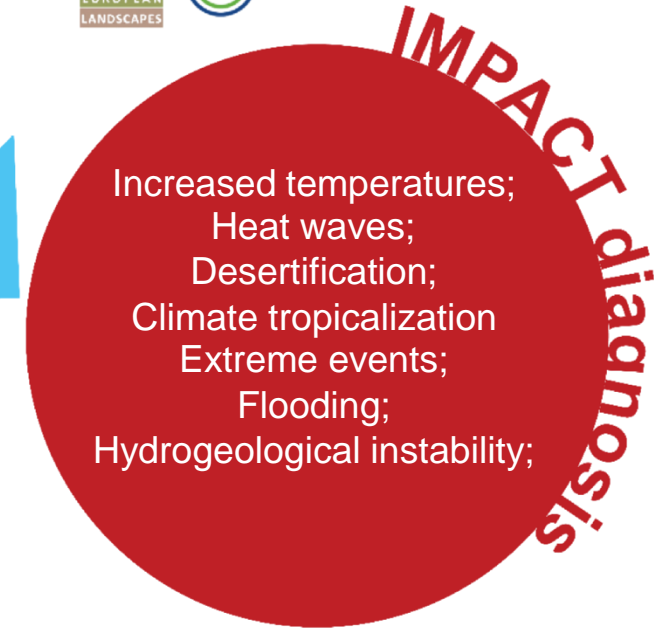
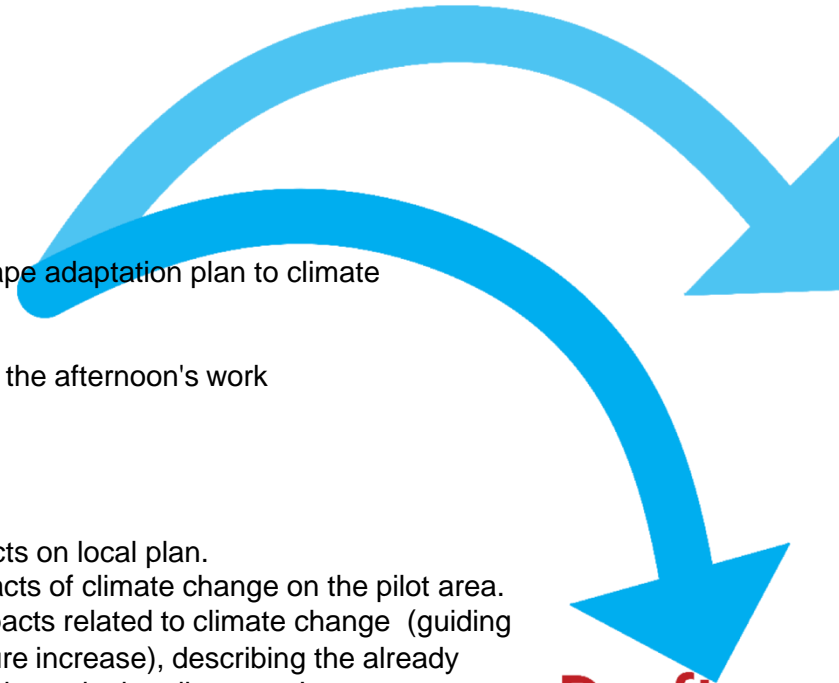
Focus groups to identify themes and possible solutions for the future plan for adapting the local landscape to climate change. Brainstorming based on the results of the diagnosis of the first part of the morning. The stakeholders are invited to reflect on the possible adaptation solutions that could be implemented in the specific context, on the objectives that the adaptation plan should take and on the themes and contents that the plan should deal with.

2:00 – 3:00 | The Future Plan: first hypothesis of possible contents and structure of the plan.

Open discussion among all stakeholders on possible contents of the future plan

3:00 - 3:30 p.m. | Conclusions - A ROADMAP for the plan.

Due to the strategic objective of the project, which in each pilot area aims to create "networks of local actors with the social, financial, administrative and technical capabilities to co-define in the future the adaptation plan of their own landscape to climate change", the workshop closes with a group discussion aimed at defining what will be needed to create the plan for adapting the Etna landscapes to climate change, in terms of knowledge, activities and resources (already available or to be acquired), and at exploring the feasibility (also in terms of connections with spatial and sector plans and with the local institutions) and the most effective process for the future creation of the plan.



Draft contents of the LACAP

- The institutional and regulatory framework
 - Promote new governance models.
 - Integration and complementarity with existing urban planning instruments and sector plans and land management tools.
 - Integration & complementarity with existing plans and instruments.
- Systemic actions on a broad territorial scale
 - Use Agriculture for experimenting innovative solutions of adaptation Improving the link between supply chains & landscape.
 - Promote a conscious & sustainable water management
 - Promote sustainable land use
- Systemic actions on the urban scale
 - Work on public space to increase resilience
 - Improving the mobility
- Systemic actions on the built heritage
 - Increasing the use of energy from renewable sources.
 - Promoting targeted actions on the built heritage.
- Awareness raising, education and communication.

Towards the agreement

Potential contribution related to a future project for the definition of a Landscape Adaptation Plan to Climate Change

- Data and knowledge, raising awareness and dissemination;
- Study of impacts on the energy front, knowledge about solar cells, demonstrator activities;
- Knowledge on built heritage and especially on industrial heritage and architecture;
- Heritage studies, activation of heritage buildings, linking partners (ICOMOS) for trying to get grants; Cultural tours; community activation;
- Community awareness; networking with local actors;
- Information about vegetation, creation of a green registry, create a ASoP – map for green management; provide volunteers to manage the park;
- Collecting data about the uses and activities of the park;
- Knowledge on technical climate change measures;
- Networking and involving other actors to build a strong network and also for potential regeneration projects;
- Promoting internal/external awareness and dissemination through the own business, financial and entrepreneurial network.
- Write proposals, documents, drawings

WP4_SOUTH-WESTERN EUROPE
(UPV)

AELCLIC Third Milestone Meeting of the Advisory Board South-Western Europe September 26. 2019

- **Polytechnic Univ. of Valencia/LAS NAVES (City of Valencia).**
Leading Pilot area of *La Huerta de Valencia-Alboraya*.
- Regional Third Party: City Of Torrevieja
Multiplier Pilot Landscape: La Mata-Torrevieja
- Regional Third Party: Consorci Del Bèsos and Barcelona Regional + Landscape Observatory of Catalonia
Multiplier Pilot Landscape: Riu Besòs (Metropolitan Area Of Barcelona);
- Regional Third Party: University Of Lleida + Regional/Municipal Authorities + Landscape Observ. Catalonia
Multiplier Pilot Landscape: Serres D'ancosa
Multiplier Pilot Landscapes: Parc Natural D'Alt Pirineu
 - Landscape Observatory of Catalonia (ES), **Multiplier Pilot in Catalunya (Penedès /Baix Llobregat) landscape.**
 - Landscape Observatory of Canary Islands (ES), **Multiplier Pilot *Touristic landscape of Northern Tenerife*.**
 - University of Porto (PT), **Multiplier Pilot *Vila do Conde Coastal Landscape*.**

AELCLIC Milestone Meeting 3

AELCLIC PATHFINDER (Partners & Third parties; Pilot Landscapes)

AELCLIC partners

- Academic
- Regions / Cities
- NGOS
- Business

AELCLIC third parties

- Academic
- Regions / Cities
- NGOS
- Business

AELCLIC Leading Pilot Landscapes

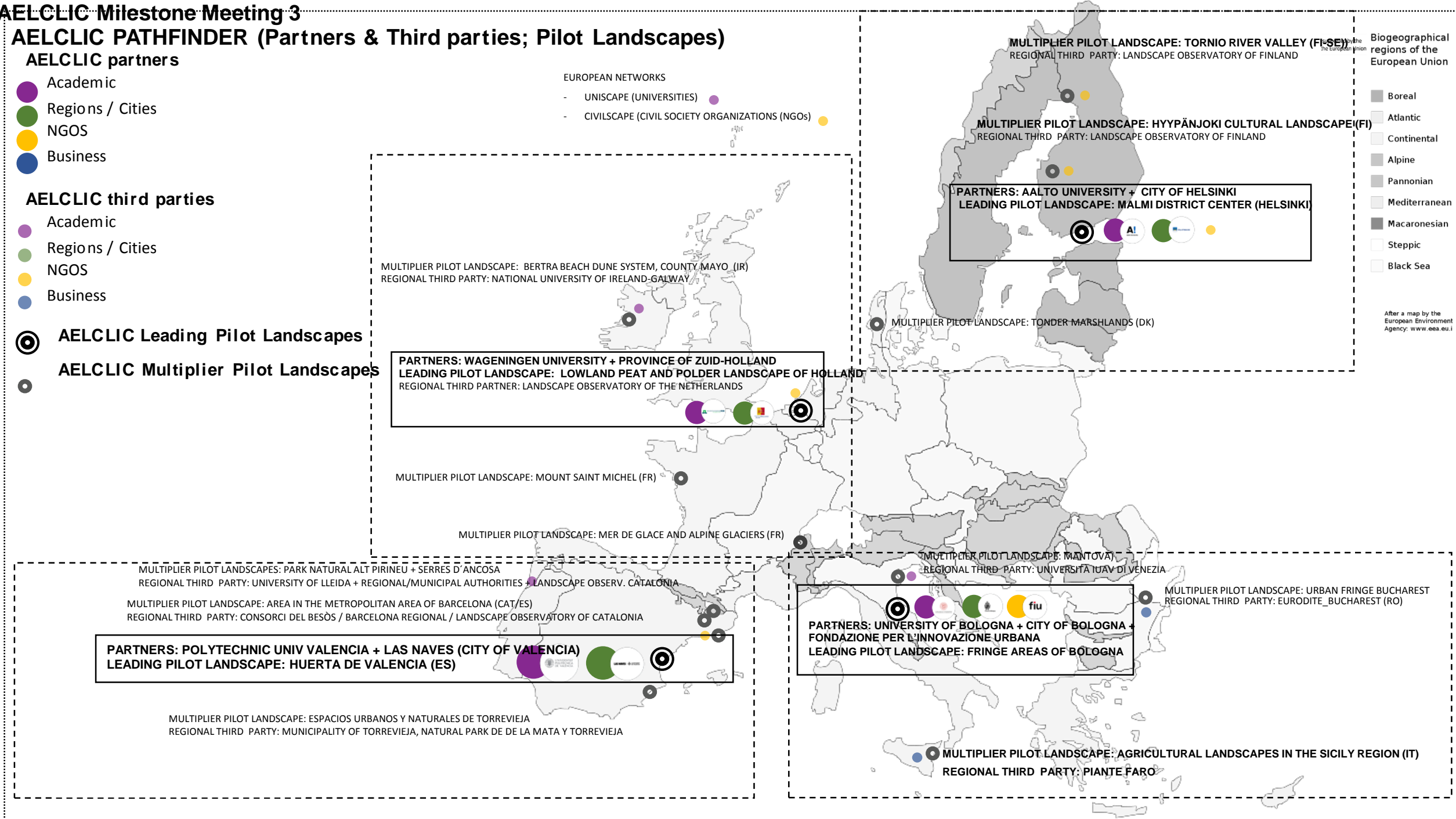
AELCLIC Multiplier Pilot Landscapes

EUROPEAN NETWORKS

- UNISCAPE (UNIVERSITIES)
- CIVILSCAPE (CIVIL SOCIETY ORGANIZATIONS (NGOs))


- Biogeographical regions of the European Union
- Boreal
 - Atlantic
 - Continental
 - Alpine
 - Pannonian
 - Mediterranean
 - Macaronesian
 - Steppic
 - Black Sea

After a map by the European Environment Agency: www.eea.eu





Climate-KIC

 Climate-KIC is supported by the EIT, a body of the European Union

1. Huerta Valencia-Alboray

2. WORKSHOP IN LA HUERTA DE VALENCIA-ALBORAYA (SPAIN)

ACTIVITY: Workshop1_HUERTA DE VALENCIA-ALBORAYA_PILOT LANDSCAPE

DATE and TIME: 17.6.2019, 16:00-19:30

PLACE: Valencia (Spain), Las Naves headquarters

ORGANIZERS:

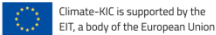
- Lidia García / Las Naves
- Francisco Galiana / Universitat Politècnica de València
- Emilio Servera / Universitat Politècnica de València



PRESENT LOCAL NETWORK

PARTICIPANT	SECTOR	INSTITUTION
Miquel Jordà	LOCAL/REGIONAL AUTHORITY	Conselleria de Agricultura, Desenvolupament Rural, Emergència Climàtica i Transició Ecològica (Regional Department of Agriculture, Rural Development, Climate Emergency and Ecological Transition)
Andreu Escrivà	PUBLIC SECTOR	València Clima i Energia (Municipal Climate Change Foundation)
Celsa Monrós	PUBLIC SECTOR	Climate-KIC Spain
Joan Damià	PUBLIC SECTOR	Climate-KIC Spain
Pilar Martínez	PUBLIC SECTOR	Climate-KIC Spain – AIJU
Ángeles Calatayud	RESEARCH	Valencian Institute of Agricultural Research (IVIA)
José Miguel de Paz	RESEARCH	Valencian Institute of Agricultural Research (IVIA)
María Vallés	RESEARCH	Universitat Politècnica de València
Antonio Lidón	RESEARCH	Universitat Politècnica de València
Miquel Minguet	PRIVATE SECTOR	Horta Viva
Raquel Aguilar	SOCIETAL ORGANIZATION	Colegio Oficial de Ingenieros Agrónomos de Levante (Official Association of Agricultural Engineers of Eastern Spain)
Alba Herrero	SOCIETAL ORGANIZATION	Fundació Assut
Pepe Castro	SOCIETAL ORGANIZATION	La Unió de Llaoradors i Ramaders (Union of Farmers and Livestock Breeders)

AELCLIC MILESTONE MEETING 3
HUERTA DE VALENCIA-ALBORAYA PILOT LANDSCAPE_WORKSHOP 1



eldiario.es

Inicio sesión

Hazte socio

eldiariocv.es

COMUNITAT VALENCIANA

Provincias

Comarcas

Política

Cultura

Medio Ambiente

Economía

Opinión

Blogs

En valencià

Un proyecto europeo para combatir los efectos del cambio climático sobre el paisaje utiliza la huerta de Valencia como laboratorio

La Universitat Politècnica de Valencia y el centro de innovación Las Naves coordinan un proyecto del EIT-Climate-KIC para diseñar un plan

L'Horta ha sido elegida como uno de los paisajes representativos del suroeste de Europa

Laura Martínez

Seguir a @lauramartred

29/06/2019 - 22:02h

Openbank

Grupo Santander

Todos los cajeros de Banco Santander en España a débito gratis

Emisión de tarjetas Open Debit y Open Credit gratuitas para el primer titular

Levante-EMV.com » València

T+

T-

f

in

Diseñan un plan para combatir los efectos del cambio climático en la huerta

J. B. R. | València | 26.06.2019 | 22:29

Un equipo formado por investigadores de la Universitat Politècnica de València (UPV) y el centro de innovación Las Naves del Ayuntamiento de València ha puesto en marcha el proyecto Pathfinder AELCLIC para definir un plan de adaptación de la huerta valenciana al cambio climático.

El objetivo de este proyecto es crear un grupo de redes de trabajo regionales y locales para codefinir planes de adaptación al cambio climático en 16 paisajes europeos. La huerta valenciana ha sido el elegido como paisaje piloto líder de la zona del suroeste europeo.

La primera fase de este proyecto, al que también se ha adherido el Ayuntamiento de Alboraya, consiste en crear una red de trabajo local para definir la estructura de un futuro Plan de Adaptación del Paisaje. Esta consorcio estará integrada por las instituciones o

tutete

Galerías de València

À Punt - 14.08.2019 | Terra V


apuntmedia.es/va/a-la-carta/programes/vist-en-tv/terra-viva/14-08-2019-terra-viva

Registre Favorites


À Punt

Ràdio en directe TV en directe Programació Notícies Esports A la carta L'oratge La Colla


A la carta Terra viva



terra Investigador UPV
Francisco Galiana



Vídeos relacionats




A la carta Terra viva
24.09.2019 | Terra Viva

- Activated the working group and Workshop 1st: 17th June
- 2nd Workshop: 16-21 October



Climate-KIC

 Climate-KIC is supported by the EIT, a body of the European Union


2. La Mata - Torrevieja

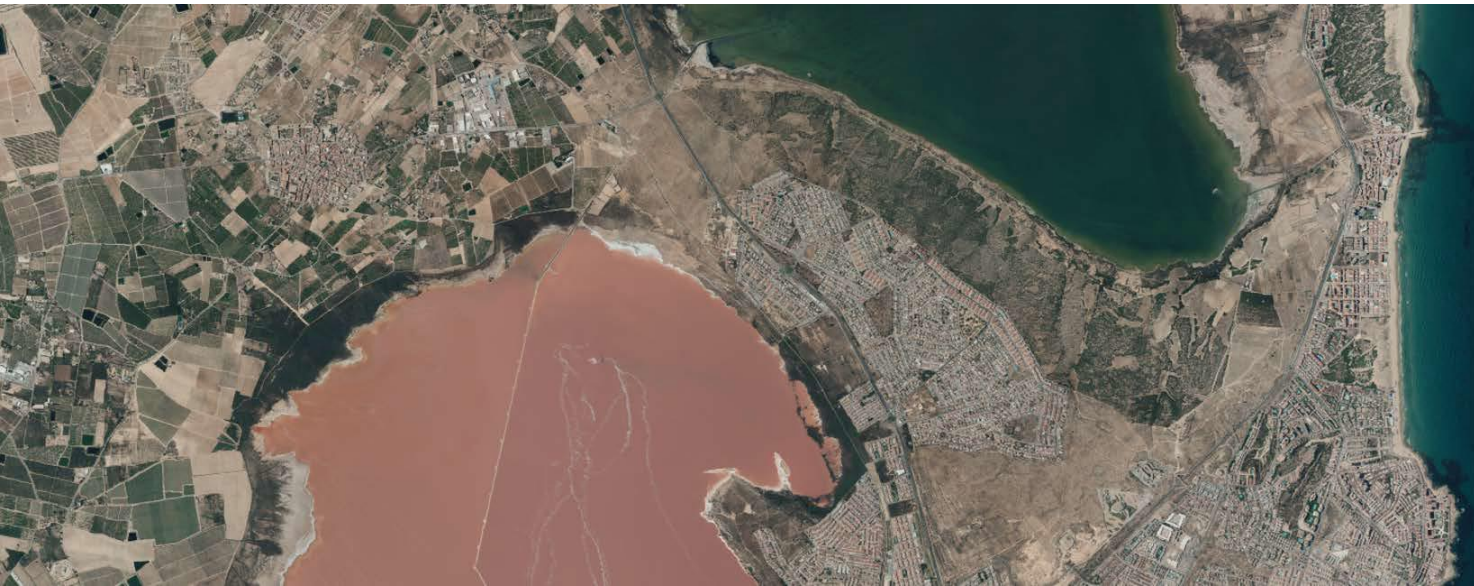
AELCLIC Milestone Meeting 3

Pilot Landscape of La Mata-Torrevieja



Climate-KIC

 Climate-KIC is supported by the EIT, a body of the European Union



From the waterfront to the protected area of the Lagunas de la Mata and Torrevieja, or the mixed density urban areas, the landscape surrounding the city of Torrevieja combines a wide range of environments.

elperiòdic

Torrevieja

PORTADA

NOTICIAS

OPINIÓN

FOTOS

VÍDEOS

ESPECIALES

HEMEROTECA

LOCALIDADES

Siente lo que es ser libre al volante.

Configúralo

Ford

Go Further

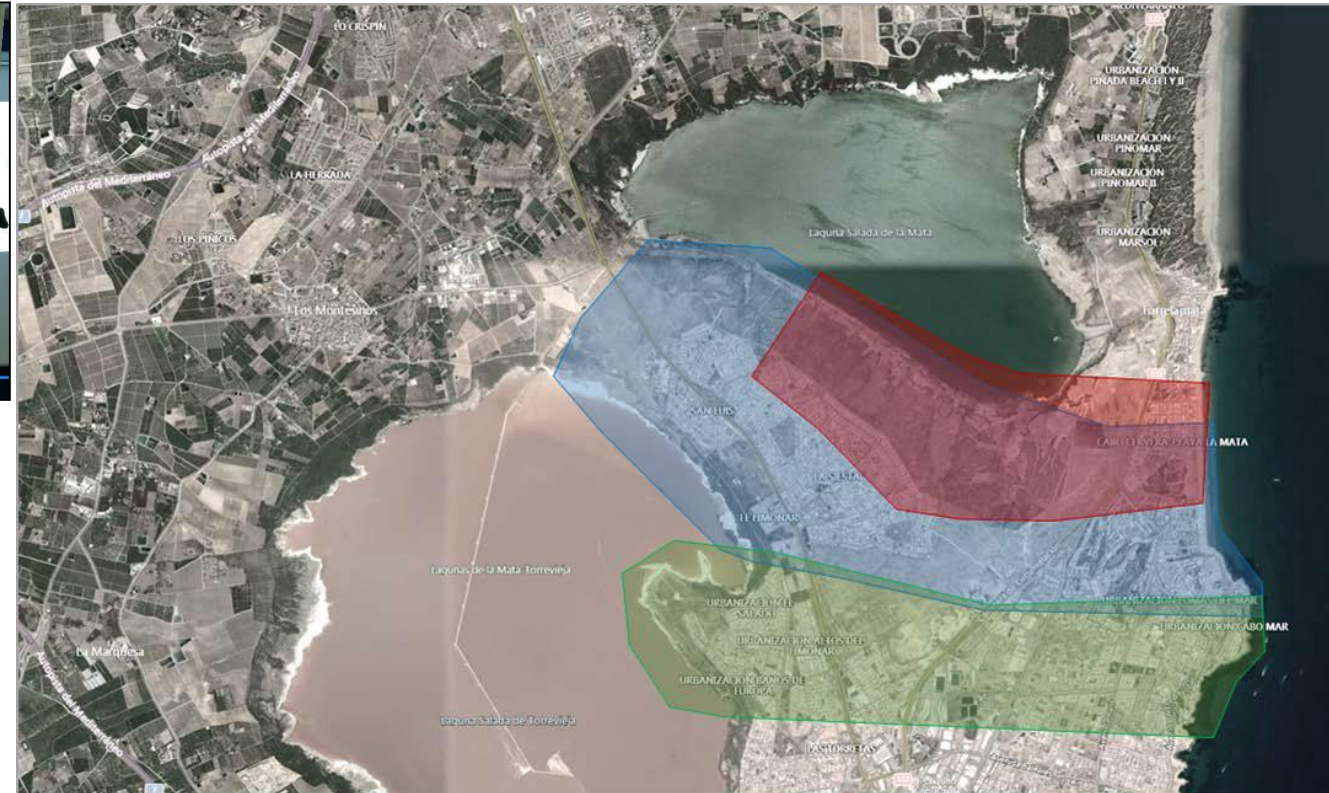
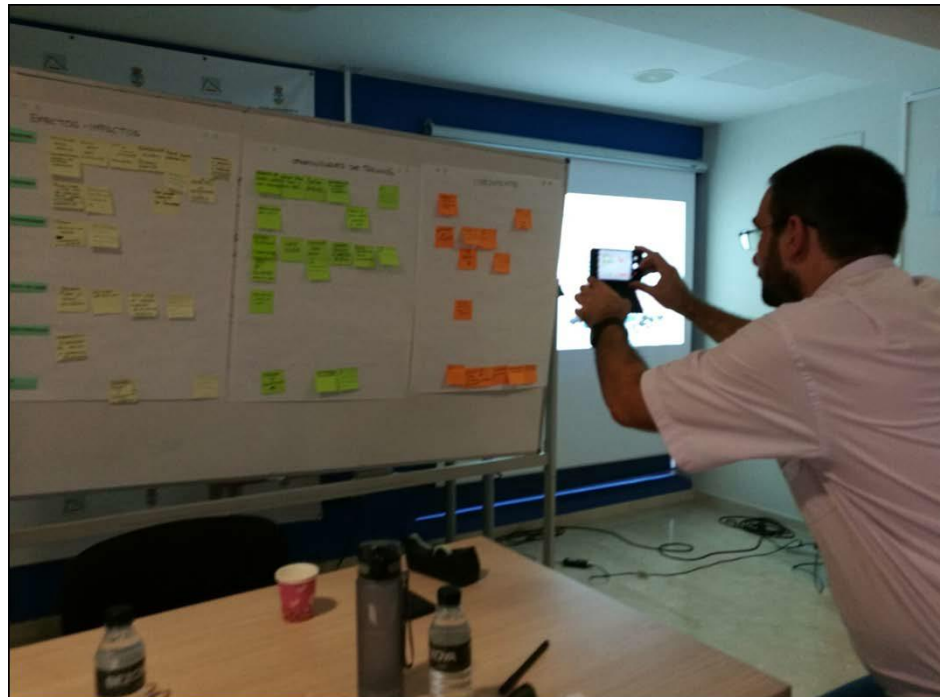
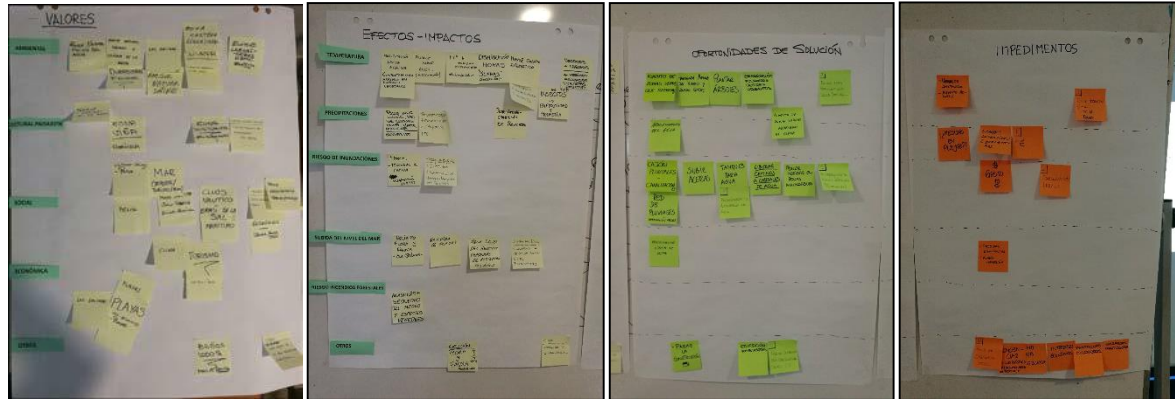
TORREVIEJA | MEDIO AMBIENTE

El frente costero de Torrevieja, elegido como uno de los paisajes piloto representativos del Suroeste de Europa

ELPERIODIC.COM - 19/09/2019

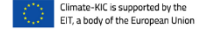
AELCLIC Milestone Meeting 3

Pilot Landscape of La Mata-Torre Vieja. Workshop 1



Pilot Landscape of La Mata-Torre Vieja. Workshop 1

- Activated the working group and Workshop 1st: 25th September
- Identify smaller area for the pilot landscape
- Rename to Pilot Landscape of La Mata – Torrevieja
- 2nd Workshop: 23rd October




3. Riu Besòs (Metropolitan Area Of Barcelona)

AELCLIC Milestone Meeting 3

Pilot Landscape of: Riu Besòs (Metropolitan Area Of Barcelona)



Climate-KIC

 Climate-KIC is supported by the EIT, a body of the European Union



Multiplier Pilot Landscape: Riu Besòs (Metropolitan Area Of Barcelona)


Regional Third Party: Consorci Del Bèsos and Barcelona Regional + Landscape Observatory of Catalonia

AELCLIC Milestone Meeting 3

Pilot Landscape of Riu Besòs (Metropolitan Area Of Barcelona)



Climate-KIC

 Climate-KIC is supported by the EIT, a body of the European Union



The Besòs River Park offers a regional connector and will be used to promote and intermunicipal and participative reflection about Climate Change Adaptation and Sustainable Regional and Urban Transitions.


At a regional scale, the project will operate along the last 10 km of the Besòs river and at a local scale, the project will zoom in at the Three Chimneys industrial site located at the mouth of the Besòs river.



Workshop 1: 2 October
2nd Workshop: 29 – 31 October (to be confirmed)



Climate-KIC

 Climate-KIC is supported by the EIT, a body of the European Union

4. Serres d'Ancosa

- Regional Third Party: University Of Lleida + Regional/Municipal Authorities + Landscape Observ. Catalonia

Multiplier Pilot Landscape: Serres D'ancosa

Generalitat de Catalunya
Departament de Territori i Sostenibilitat

Observatori del Paisatge

Catàleg de Paisatge de les Comarques Centrals

Unitat de Paisatge 25: Serres d'Ancosa

Serres d'Ancosa

COMARQUES:	Alt Camp, Alt Penedès, Anoia i Conca de Barberà
SUPERFÍCIE:	22.967 ha (13.739 ha corresponen a les Comarques Centrals i 9.228 ha a la Regió Metropolitana de Barcelona).
MUNICIPIS:	La unitat inclou, totalment o parcialment, els següents municipis de les Comarques Centrals: Argençola, Bellprat, Jorba, la Llacuna, Orpí, Sant Martí de Tous, Santa Maria de Miralles i Santa Margarida de Montbui. També inclou Pontons, Torrelles de Foix, Font-rubí, Sant Quintí de Mediona i Mediona, a la Regió Metropolitana de Barcelona.

AELCLIC Milestone Meeting 3

SERRES D'ANCOSA PILOT LANDSCAPE_WORKSHOP1





Climate-KIC is supported by the EIT, a body of the European Union

Life

Les Serres d'Ancosa, paisatge resilient davant el canvi climàtic

“Taller d'identificació de mesures d'adaptació al canvi climàtic a les Serres d'Ancosa: accions d'adaptació a l'espai territorial de la Serra d'Ancosa, la Serra de Queralt - Miralles i la Serra de la Nou”

Lloc: Can Morei, Santa Candia s/n, Orpí <https://goo.gl/maps/XjrCcEWHGwNtWKtB7>

Data: 8 d'octubre de 2019

Workshop 1: 8 October
2nd Workshop: 1st week of November



PROGRAMA

9.15h Benvinguda

9.30h-11h **El paisatge agroforestal de les Serres d'Ancosa: impacte del canvi climàtic i gestió forestal multifuncional – LIFE CLIMARK**

9.30-9.45h **Temps passat i projeccions climàtiques a la Catalunya Interior**
Gabriel Borràs, responsable d'adaptació de l'OCCC

9.45-10.00h **Recursos hídrics a Catalunya. Situació de l'Aqüífer Carme-Capellades (ACA)**
Toni Munné, cap del Departament de Control i Qualitat de les Aigües

10.00h-10.15h **Prevenició d'incendis i reducció d'emissions de carboni**
Cristina Vega, professora-Investigadora de la UdL

10.15-10.45h **Gestió forestal multifuncional i mercat de crèdits climàtics**
Teresa Cervera, Coordinadora del projecte LIFE CLIMARK, CPF
Iñaki Gili, responsable de mitigació de l'OCCC

10.45-11.15h **Pausa cafè**

11.15-14.30h Planificació territorial participativa d'adaptació al canvi climàtic

11.15-11.30h Accions d'adaptació a l'Alt Penèdes. Resultats del LIFE CLINÒMICS

Marta Salamé, Consell Comarcal de l'Alt Penedès

11.30-11.50h El Projecte AELCLIC (Adaptació del Paisatges Europeus al Canvi Climàtic)

Sr. Francisco Galiana, professor-investigador a la UPV

11.50-14.30h Taller sobre mesures d'adaptació al CC a les Serres d'Ancosa.

Dinamització a càrrec de la Universitat Politècnica de València (Emilio Servera i Francisco Galiana)

Valors del paisatge i identificació dels efectes del CC
Pluja d'idees sobre possibles solucions als efectes identificats i el possible paper del projecte AELCLIC. Possible pla de treball.

14.30h Dinar

AELCLIC Milestone Meeting 3

SERRES D'ANCOSA PILOT LANDSCAPE_WORKSHOP1



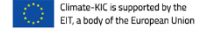
Climate-KIC

Climate-KIC is supported by the EIT, a body of the European Union

NOM	ENTITAT	CÀRREC	CONTACTE	ASSISTÈNCIA	
Gabriel Borràs	Oficina Catalana del Canvi Climàtic	Responsable d'adaptació CC	gborras@gencat.cat	CONFIRMAT	1
Iñaki Gili	Oficina Catalana del Canvi Climàtic	Responsable de Mitigació CC	igilij@gencat.cat	CONFIRMAT	2
Toni Muné	Agència Catalana de l'Aigua	Responsable de Control i Qualitat de les aigües	anmunne@gencat.cat	endent person	3
Cristina Vega	Universitat de Lleida	Professora - Investigadora	cvega@eagrof.udl.cat	CONFIRMAT	4
Teresa Cervera	Centre de la Propietat Forestal	Cap de l'Àrea de Foment de la GFS	tcervera@gencat.cat	CONFIRMAT	5
Marta Salamé	Consell Comarcal Alt Penedès	Responsable LIFE CLINÒMICS	msalame@ccapenedes.cat	CONFIRMAT	6
Francisco Galiana	Universitat Politècnica de València	Professors-investigadors/es	fgaliana@agf.upv.es	CONFIRMAT	7
Emilio Servera	Universitat Politècnica de València	Professors-investigadors/es	emsermar@upv.es	CONFIRMAT	8
Simó Serra	Bosquerols	Cooperativa serveis forestals	simo@socabosc.com	CONFIRMAT	9
Jordi Reixach	Associació de propietaris forestals Serra Miralles-Orpinell	Vicepresident	jordi@reixachs.net	CONFIRMAT	10
Andreu Manzano	Agència Catalana de l'Aigua	Tècnic Planificació		pendent	
Raquel Sánchez/Angel Rey	DARP Anoia	DARP	raquel.sanchez@gencat.cat	CONFIRMAT	11
Joan Mas Raja	UNIO PAGESOS	Executiva forestal de la Unió de Pagesos Anoia	joanmasraja@gmail.com	CONFIRMAT	12
David Vivet Taña	UNIO PAGESOS	Tècnic sector forestal Unió de Pagesos	dvivet@uniopagesos.cat	CONFIRMAT	13
Jordi Vilalta	Consorci del Leader de la Catalunya Central	Gerent	gerencia@lcc.cat	CONFIRMAT	14
Pol Bacardit	Associació de propietaris forestals Serra Miralles-Orpinell	Tècnic DIBA	bacardittp@diba.cat	CONFIRMAT	15
Jaume Olivella	Associació de propietaris forestals Serra Miralles-Orpinell	President		pendent	
Agustí Pelfort Homs	Cooperativa Eduvic	Director Centre de Menors - Recuperació espais	diarama.asc@gmail.com	CONFIRMAT	16
Mónica Prieto	AirBnb - Empresa turisme	Community Organiser Policy & Communications Team	monica.prieto@airbnb.com	CONFIRMAT	17
Georgina Saumell	Celler Mas Rodo (Sant Joan de Mediona)	pendent confirmar persona		pendent	
Santiago Cerdà	Propietat agrària	Expert agroforisteria		CONFIRMAT	18
Nuria Ruiz	Associació de propietaris forestals Serralada Prelitoral Penec	Tècnic DIBA	ruizrn@diba.cat	CONFIRMAT	19
Rosa Ma. Garcia	Associació de propietaris forestals Serralada Prelitoral Penec	Vocal Junta / Masia Sapera	rosisapera@telefonica.net	CONFIRMAT	20
Pere Argelich/Iolanda Ruiz	Ajuntament Santa Maria de Miralles	Alcalde/regidora	p.argelich@gmail.com	CONFIRMAT	21
Daniel Gutiérrez	Consell Comarcal Anoia	Conseller de Turisme		pendent	
Pere Casals	Centre de Ciència i Tecnologia Forestal de Catalunya	Investigador	pere.casals@ctfc.es	CONFIRMAT	22
Teresa Baiges	Centre de la Propietat Forestal	Responsable Transferència Coneixement	tbaiges@gencat.cat	CONFIRMAT	23
Juan Luís Abián	Centre de la Propietat Forestal	Director gerent	ajabipe@gencat.cat	CONFIRMAT	24
Silvia Escolano	Diputació de Barcelona	Àrea planificació	parpalsn@diba.cat	CONFIRMAT	25
Helena Perxacs	Diputació de Barcelona	Àrea planificació	perxacsmh@diba.cat	CONFIRMAT	26
Joan (Can Feixes)	DO Penedès	President		pendent	



Climate-KIC



5. Parc Natural D'Alt Pirine



Regional Third Party: University Of Lleida + Regional/Municipal Authorities + Landscape Observ. Catalonia **Multiplier**
Pilot Landscape: Parc Natural D'Alt Pirineu

The pilot landscape of high and medium Pyrenean mountains has a great diversity and richness of its landscapes. The inclusion of the Park in the project would offer the possibility of promoting an participatory reflection on the Adaptation to Climate Change of its natural and cultural values and of the productive activities such as high mountain agriculture or tourism.

Presentation of the AELCLIC Pathfinder: 4 October (to be confirmed activation of Pilot)

Workshop 1-2 : A single journey 1st week of November

Workshop 1 e-mail test survey: middle October & workshop 2 at 1st week of November.

WP3_ATLANTIC-ALPINE EUROPE
(WUR)

WP2_NORTHERN EUROPE

(Aalto University)



WORKSHOP1 (3,5 HOURS): CREATING LOCAL NETWORKS + DEFINING WORK-PLANS

MALMI DISTRICT_workshop1_12.6.2019



HYYPÄ RIVER VALLEY_workshop1_26.4.2019



TORNIO RIVER VALLEY_workshop1_10.5.2019



WORKSHOP1 (3,5 HOURS): CREATING LOCAL NETWORKS + DEFINING WORK-PLANS

MALMI DISTRICT (13+2 PARTICIPANTS)_urban

NAME OF CONTACT	INSTITUTION	SECTOR
Antti Mentula	City of Helsinki (Urban Environment Division)	LOCAL/REGIONAL ADMINISTRATION
Satu Tarula	City of Helsinki (Urban Environment Division)	LOCAL/REGIONAL ADMINISTRATION
Laura Yrjänä	City of Helsinki (Urban Environment Division)	LOCAL/REGIONAL ADMINISTRATION
Tiia Naskali	The Finnish Association of Landscape Industries	ECONOMY SECTOR
Miimu Airaksinen	Finnish Association for Civil Engineers, RIL	ECONOMY SECTOR
Sirpa Lamminluoto	Malmi Nova shopping centre	ECONOMY SECTOR
Joel Huotilainen	REDITO Property Investor, Malmintori	ECONOMY SECTOR
Merja Carlander	Helsingin yrittäjät, Pohjois-Helsinki ry / Entrepreneurs of Helsinki	ECONOMY SECTOR
Maria Laurila	Malmi association	SOCIETAL GROUP
Andrea Botero	Ninho kulttuurikeskus ry	SOCIETAL GROUP
Joonas Viita	neighbour	SOCIETAL GROUP
Sari Möttönen	neighbour	SOCIETAL GROUP
Hanna Maidell	neighbour	SOCIETAL GROUP

VISION OLD MALMI DISTRICT
(under development)

AELCLIC PILOT
HELSINKI

HELSINKI CLIMATE
CHANGE ADAPTATION &
MITIGATION
PROGRAMME
+ CARBON NEUTRAL
HELSINKI 2035

HYYPÄ RIVER VALLEY (12+2 PARTICIPANTS)_rural + protected

PARTICIPANT	INSTITUTION	SECTOR
Linda Leinonen	Kauhajoki town	LOCAL/REGIONAL AUTHORITY
Harri Virtanen	Kauhajoki town	LOCAL/REGIONAL AUTHORITY
Marketta Nummijärvi	ELY/South-Bothnia, Seinäjoki	LOCAL/REGIONAL AUTHORITY
Leena Rinkineva-Kantola	ELY/South-Bothnia	LOCAL/REGIONAL AUTHORITY
Juhani Hallasmaa	ELY/South-Bothnia	LOCAL/REGIONAL AUTHORITY
Timo Lakso	Regional Council of South Ostrobothnia	LOCAL/REGIONAL AUTHORITY
Niina Tuovinen	Suupohjan peruspalveluliikelaitoskuntayhtymä	PUBLIC SECTOR
Anna Tall	Seinäjoen kaupunki/AMK	RESEARCH
Sulevi Riukulehto	Ruralia-instituutti	RESEARCH
Riikka Asunmaa	Pro Agria	ECONOMY SECTOR
Asko Ojala	Hyypä village society	SOCIETAL ORGANIZATION + FARMERS
Mikko Rotola-Pukkila	Hyypä valley conservation board	SOCIETAL ORGANIZATION + FARMERS

- HYYPÄNJOKI CULTURAL LANDSCAPE
CONSERVATION & MANAGEMENT PLAN

- KAUAJOKI – CITY STRATEGY

AELCLIC_PILOT_HYYPÄNJOKI

TORNIO RIVER VALLEY (12+2 PARTICIPANTS)_natural-rural

NAME OF CONTACT	INSTITUTION	SECTOR
Sampo Kangastalo	Tornio City	REGIONAL/LOCAL ADMINISTRATION
Anu Rautiala	Tornio City	REGIONAL/LOCAL ADMINISTRATION
Aapo Mäenpää	Tornio City	REGIONAL/LOCAL ADMINISTRATION
Göran Wigren	Haparanda City	REGIONAL/LOCAL ADMINISTRATION
Tiina Elo	Lapin Liitto	REGIONAL/LOCAL ADMINISTRATION
Riikka Pyykkö	The Museum of Tornio Valley	PUBLIC BODY
Virve Sallisalmi	Tranboundary river comission	PUBLIC BODY
Marika Saranne	Lapin ammattikorkeakoulu	RESEARCH
Anne-Mari Söderström	MTK	ECONOMY SECTOR
Petri Leinonen	Farmer	ECONOMY SECTOR
Martti Isto	Farmer	ECONOMY SECTOR
Markku Vaaraniemi	Fishers	ECONOMY SECTOR

TORNIO- (FI) – VISION 2027

HAAPARANTA (SE) –PLAN/STRATEGY

TORNIO-HAPARANDA-VISION 2027

AELCLIC
PILOT_
TORNIO
RIVER

TORNIO TOURISM MASTERPLAN

TORNIO CITY STRATEGY 2017-2021

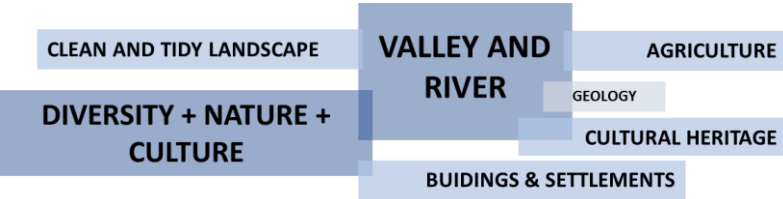
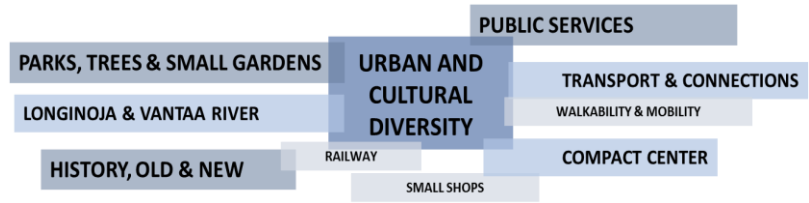
WORKSHOP1 (3,5 HOURS): CREATING LOCAL NETWORKS + DEFINING WORK-PLANS

MALMI DISTRICT (13+2 PARTICIPANTS)_urban

HYYPÄ RIVER VALLEY (12+2 PARTICIPANTS)_rural + protected

TORNIO RIVER VALLEY (12+2 PARTICIPANTS)_natural-rural

WHAT ARE THE MAIN VALUES OF THIS PILOT LANDSCAPE?



WHAT IS IMPORTANT IN THIS PILOT LANDSCAPE FOR YOU OR FOR THE SECTOR/COMMUNITY YOU ARE REPRESENTING



WHAT DO YOU KNOW ABOUT CLIMATE CHANGE?



WORKSHOP1 (3,5 HOURS): CREATING LOCAL NETWORKS + DEFINING WORK-PLANS

MALMI DISTRICT (13+2 PARTICIPANTS)_urban

HYYPÄ RIVER VALLEY (12+2 PARTICIPANTS)_rural + protected

TORNIO RIVER VALLEY (12+2 PARTICIPANTS)_natural-rural

HOW CAN CLIMATE CHANGE AFFECT THIS PILOT LANDSCAPE AND YOUR DAILY LIFE?



HOW DO YOU THINK THAT THE AELCLIC PROJECT CAN CONTRIBUTE TO THE EXISTING PLANS FOR THIS PILOT LANDSCAPE?



LOCAL STAKEHOLDERS IN THE AELCLIC WEBPAGE? (after receiving their permission)

INSTITUTION	TYPE OF STAKEHOLDER	email	NAME OF CONTACT
City of Helsinki / Urban Environment Division	LOCAL/REGIONAL ADMINISTRATION	antti.mentula@hel.fi	Antti Mentula
City of Helsinki / Urban Environment Division	LOCAL/REGIONAL ADMINISTRATION	satu.tarula@hel.fi	Satu Tarula
City of Helsinki / Urban Environment Division	LOCAL/REGIONAL ADMINISTRATION	laura.yrjana@hel.fi	Laura Yrjänä
Suomen Rakennusinsinöörien Liitto RIL	PRIVATE SECTOR	miimu.airaksinen@ril.fi	Miimu Airaksinen
Pohjois-Helsingin yrittäjät/Entrepreneur	PRIVATE SECTOR	merja@merjacarlander.fi	Merja Carlandr
Viherympäristöliitto ry / The Finnish Association of Landscape Industries	PRIVATE SECTOR	sauli.rouhinen@gmail.com	Sauli Rouhinen
Malmi-seura	SOCIETAL GROUP	laurila.m@gmail.com	Maria Laurila
Ninho kulttuurikeskus ry	SOCIETAL GROUP	info@ninho.fi	Andrea Botero
Neighbor	SOCIETAL GROUP	hannamaidell@gmail.com	Hanna Maidell

INSTITUTION	LOGO in WEB_AELCLIC	CONTACT	Email CONTACT in web
Kauhajoki Town	YES		
ELY/South-Bothia, Seinäjoki	YES	Marketta Nummijärvi	marketta.nummijarvi@ely-keskus.fi
Regional Council of South Ostrobothnia	YES	Timo Lakso	timo.lakso@etela-pohjanmaanliitto.fi
Suupohjan peruspalveluliikelaitoskuntayhtymä	YES	Niina Tuovinen	niina.tuovinen@ilky
Ruralia-instituutti	YES	Sulevi Riukulehto	sulevi.riukulehto@helsinki.fi
Paikallinen asukas-	NO	Asko Ojala	asko.ojala@ssvnet.fi
Paikallinen asukas-maisemhoitokunta	NO	Mikko Rotola-Pukkila	mikko@timantti.com
Seinäjoen museot	YES	Susanna Tyrvainen	susanna.tyrvainen@seinajoki.fi
Pro-agria	YES	Riikka Asunmaa	riikka.asunmaa@maajakotitalousnaiset.fi

INSTITUTION	NAME OF CONTACT	email
Tornio City	Sampo Kangastalo	sampo.kangastalo@tornio.fi
Haparanda Stad	Göran Wigren	goran.wigren@haparanda.se
Lapin Liitto	Tiina Elo	Tiina.Elo@lapinliitto.fi
The Museum of Tornio Valley	Riikka Pykkö	riikka.pykko@tornio.fi
Tranboundary river comission	Virve Sallisalmi	virve.sallisalmi@fsgk.se
Lapin ammattikorkeakoulu	Marika Saranne	marika.saranne@lapinamk.fi
MTK	Anne-Mari Söderström	sammalhoivi@sammalhoivi.fi
Farmer	Petri Leinonen	petri.leinonen@elomestari.fi

WORKSHOP2 (3,5 HOURS): CO-IDENTIFYING CLIMATE CHANGE IMPACTS & OPPORTUNITIES

1. RESULTS OF THE WORKSHOP1 (+ short introduction to the AELCLIC project for the new stakeholders)
2. CLIMATE CHANGE EFFECTS IN EUROPE, FINLAND AND THE PILOT LANDSCAPE
- 3. TEAMWORK (IN MULTISTAKEHOLDER TEAMS)**
 - **CO-DEFINITION OF KEY-TOPICS FOR CLIMATE CHANGE ADAPTATION IN THE PILOT LANDSCAPE?**
 - **CO-IDENTIFICATION OF CLIMATE CHANGE IMPACTS AND OPPORTUNITIES FOR THE SELECTED TOPICS**
 - **CO-DESIGN OF CLIMATE CHANGE TRANSITIONS (FOR THE SELECTED TOPICS AND IN RESPONSE TO THE IDENTIFIED BARRIERS/OPPORTUNITIES)?**

WORKSHOP2 (3,5 HOURS): CO-IDENTIFYING CLIMATE CHANGE IMPACTS & OPPORTUNITIES

MALMI DISTRICT_workshop2_12.6.2019



HYYPÄ RIVER VALLEY_workshop2_14.6.2019



TORNIO RIVER VALLEY_workshop2_30.9.2019



WORKSHOP2 (3,5 HOURS): CO-IDENTIFYING CLIMATE CHANGE IMPACTS & OPPORTUNITIES

MALMI DISTRICT (12+2 PARTICIPANTS)

NAME OF CONTACT	INSTITUTION	TYPE OF STAKEHOLDER
Susanna Kankaanpää	Urban Environment Division	LOCAL/REGIONAL ADMINISTRATION
Satu Tarula	Urban Environment Division	LOCAL/REGIONAL ADMINISTRATION
Kirsi Rantama	Urban Environment Division	LOCAL/REGIONAL ADMINISTRATION
Niina Kylliäinen	HSY	LOCAL/REGIONAL ADMINISTRATION
Hossam Hewidy	Aalto_Department of Architecture	RESEARCH
Sauli Rouhinen	Viherympäristöliitto	PRIVATE SECTOR
Sirpa Lamminluoto	Malmi Nova shopping centre/Entrepreneur	PRIVATE SECTOR
Jarmo Pulkainen	REDITO Property Investors Oy / Malmintorin kiinteistö- osakeyhtiö	PRIVATE SECTOR
Merja Carlander	Pohjois-Helsingin yrittäjät/Entrepreneur	PRIVATE SECTOR
Maria Laurila	Malmi-seura	SOCIETAL GROUP
Hanna Maidell	inhabitant	SOCIETAL GROUP
Sari Möttönen	inhabitant	SOCIETAL GROUP

VISION OLD MALMI DISTRICT
(under development)

AELCLIC PILOT
HELSINKI

HELSINKI CLIMATE
CHANGE ADAPTATION &
MITIGATION
PROGRAMME
+ CARBON NEUTRAL
HELSINKI 2035

HYYPÄ RIVER VALLEY (14+2 PARTICIPANTS)

NAME OF CONTACT	INSTITUTION	TYPE OF STAKEHOLDER
Timo Lakso	Etelä-Pohjanmaan liitto	LOCAL/REGIONAL AUTHORITY
Niina Tuovinen	Suupohjan perus-palveluliikelaitoskuntayhtymä	PUBLIC SECTOR
Susanna Tyrväinen	Seinäjoen museot	PUBLIC SECTOR
Jeremias Laitamäki	Kauhajoki Youth Council	SOCIETAL ORGANIZATION
Merja Rikala	Luonnonsuojelupiiri	SOCIETAL ORGANIZATION
Neea Leppälä	4H	SOCIETAL ORGANIZATION
Asko Ojala	Farmer, Hyypä village society	PRIVATE SECTOR / SOCIETAL ORGANIZATION
Mikko Rotola-Pukkila	Farmer, Hyypä valley conservation board	PRIVATE SECTOR / SOCIETAL ORGANIZATION
Matti Seppälä	farmer - coming to workshop	PRIVATE SECTOR / SOCIETAL ORGANIZATION
Jussi Parviainen	Metsänhoitoyhdistys LAKEUS	PRIVATE SECTOR
Laura Koivumäki	Geopark	PRIVATE SECTOR
Yrjö Ojaniemi	MTK	PRIVATE SECTOR
Riikka Asunmaa	Pro Agria	PRIVATE SECTOR
Erkki Vihonen	Pro Agria	PRIVATE SECTOR

- HYYPÄNJOKI CULTURAL LANDSCAPE
CONSERVATION & MANAGEMENT PLAN

- KAUAJOKI – CITY STRATEGY

AELCLIC_PILOT_HYYPÄNJOKI

TORNIO RIVER VALLEY (20+2 PARTICIPANTS)

NAME OF CONTACT	INSTITUTION	TYPE
Sampo Kangasalo	Tornio City	REGIONAL/LOCAL ADMINISTRATION
Markus Kannala	Tornio City	REGIONAL/LOCAL ADMINISTRATION
Minna Karhunen	Tornio City	REGIONAL/LOCAL ADMINISTRATION
Jarmo Lokio	Tornio City	REGIONAL/LOCAL ADMINISTRATION
Aapo Mäenpää	Tornio City	REGIONAL/LOCAL ADMINISTRATION
Timo Nouslainen	Tornio City	REGIONAL/LOCAL ADMINISTRATION
Birgitta Tamminen	Tornio City	REGIONAL/LOCAL ADMINISTRATION
Anu Rautiala	Tornio City	REGIONAL/LOCAL ADMINISTRATION
Göran Wigren	Haparanda City	REGIONAL/LOCAL ADMINISTRATION
Jimmy Henriksson	Haparanda City	REGIONAL/LOCAL ADMINISTRATION
Sofia Rosendahl	Haparanda City	REGIONAL/LOCAL ADMINISTRATION
Robert Ekholm	Haparanda City	REGIONAL/LOCAL ADMINISTRATION
Stina Almkvist	Region Norrbotten	REGIONAL/LOCAL ADMINISTRATION
Niina Karjalainen	ELY-centre	REGIONAL/LOCAL ADMINISTRATION
Tiina Elo	Lapin Liitto	REGIONAL/LOCAL ADMINISTRATION
Tuula Ajanki	Tornionlaakson neuvosto	REGIONAL/LOCAL ADMINISTRATION
Minna Hejala	The Museum of Tornio Valley	PUBLIC BODY
Riikka Pyykkö	The Museum of Tornio Valley	PUBLIC BODY
Teija Yli-Martimo	The Museum of Tornio Valley	PUBLIC BODY
Virve Saalimäki	Transboundary river comision	PUBLIC BODY
Tero Mustonen	Lumi, IPCC	RESEARCH
Marika Saranne	Lapin ammattikorkeakoulu	RESEARCH
Sanna Tyni	Lapin ammattikorkeakoulu	RESEARCH
Anne Anttila	Outokaira	ECONOMY SECTOR
Anne-Mari Söderström	MTK	ECONOMY SECTOR
Petri Leinonen	Farmer	ECONOMY SECTOR
Martti Isto	Farmer	ECONOMY SECTOR
Johannes Mäkitäavola	Farmer	ECONOMY SECTOR
Markku Vaaranemi	Fishers	ECONOMY SECTOR
Pekka Pelttari	Fishers/Tornio City	ECONOMY SECTOR
Jarno Niskala	Pro Siika	SOCIETAL GROUP/CIVIL ORGANIZATION
Elja Tervahauta	Village- / city district associations	SOCIETAL GROUP/CIVIL ORGANIZATION
Anu Davidilla	4H	SOCIETAL GROUP/CIVIL ORGANIZATION

TORNIO- (FI) – VISION 2027

HAAPARANTA (SE) – PLAN/STRATEGY

TORNIO-HAPARANDA-VISION 2027

AELCLIC
PILOT
TORNIO
RIVER

TORNIO TOURISM MASTERPLAN

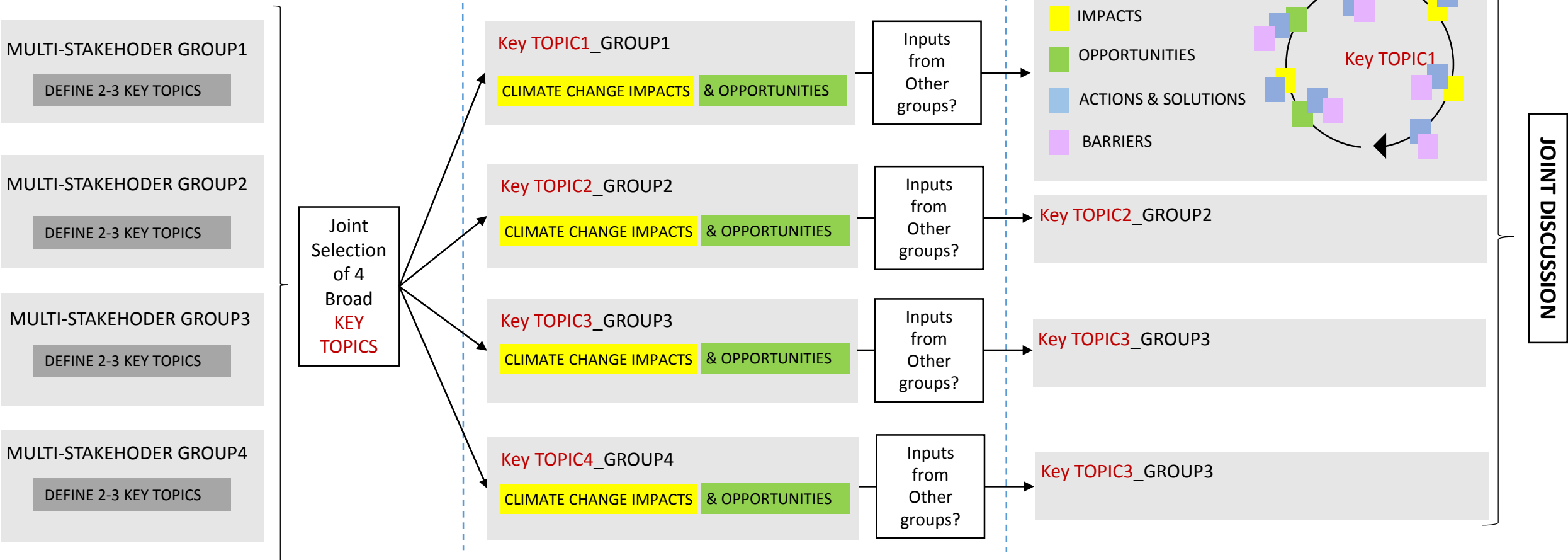
TORNIO CITY STRATEGY 2017-2021

WORKSHOP2 (3,5 HOURS): CO-IDENTIFYING CLIMATE CHANGE IMPACTS & OPPORTUNITIES

TASK 1 / TEHTÄVÄ 1, 10 min + 10 min.:
Co-definition of key-topics for the Pilot Landscape

TASK 2 / TEHTÄVÄ 2, 15 min + 15 min:
Co-identification of Climate Change impacts and opportunities for the selected topics

TASK 3 / TEHTÄVÄ 3, 45 min + 15 min :
CO-DESIGN of Climate Change Transitions (for the selected topics and in response to the identified impacts and opportunities)



WORKSHOP2 (3,5 HOURS): CO-IDENTIFYING CLIMATE CHANGE IMPACTS & OPPORTUNITIES

MALMI DISTRICT (12+2 PARTICIPANTS)

Join selection of THREE broad key topics:

TOPIC 1: BUILT AND NATURAL ENVIRONMENT

TOPIC 2: SOCIO-CULTURAL ENVIRONMENT, WELLBEING, WAYS OF LIVING AND IDENTITY

TOPIC 3: SMART MOBILITY AND LOCAL ECONOMY

HYYPÄ RIVER VALLEY (14+2 PARTICIPANTS)

Join selection of FOUR broad key topics:

TOPIC 1: AGRICULTURE AND FORESTRY & NATURAL ENVIRONMENT

TOPIC 2: PLANNING, BUILT ENVIRONMENT & INFRASTRUCTURES

TOPIC 3: ENERGY, PEOPLE & WAYS OF LIVING

TOPIC 4: NEW ECONOMIES? INDUSTRY AND SERVICE SECTOR

TORNIO RIVER VALLEY (20+2 PARTICIPANTS)

Join selection of FOUR broad key topics:

TOPIC 1: ENVIRONMENT, NATURE & BIODIVERSITY

TOPIC 2: WATER SYSTEMS

TOPIC 3: CULTURAL ENVIRONMENT & WAYS OF LIVING

TOPIC 4: SUSTAINABLE ECONOMY

TOPIC 1: BUILT AND NATURAL ENVIRONMENT

IMPACTS:



OPPORTUNITIES

BUILDINGS

- SOLUTIONS:**
- DENSIFICATION
 - CENTRALIZATION OF SERVICES
 - RAISING OLD BUILDINGS
 - GREEN AREA FACTOR
 - NATURAL MEADOWS
 - DEPAVE AREAS
 - LONGINOJA VALLEY

- BARRIERS:**
- MONEY & RESOURCES
 - INCREASE OF POPULATION
 - TOO MUCH EMPHASIS IN ENERGY EFFICIENCY
 - LOW USE OF NEARBY AREAS



IMPACTS:



OPPORTUNITIES

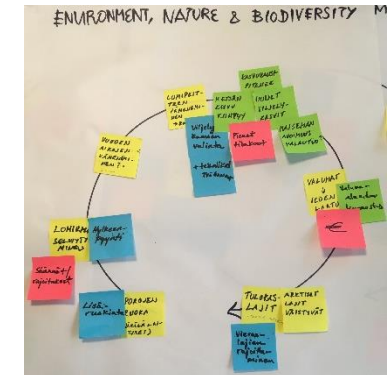


- SOLUTIONS:**
- RESTORING/FAVORING NATURAL ENVIRONMENTS
 - CARBON SEQUESTRATION THROUGH AGRICULTURE & FORESTS
 - AGRICULTURAL TECHNIQUES (DRAINAGE, SOIL MANAGEMENT, CROP ROTATION, MEADOWS)
 - ORGANIC FARMING
 - MIXED FORESTS
 - MORE INFORMATION

- BARRIERS:**
- MONEY & RESOURCES
 - LACK OF INFORMATION
 - LACK OF UNDERSTANDING OF THE CARBON CYCLE AND WHAT CARBON NEUTRALITY MEANS



TOPIC 1: ENVIRONMENT, NATURE & BIODIVERSITY



TOPIC 2: SOCIO-CULTURAL ENVIRONMENT, WELLBEING, WAYS OF LIVING & IDENTITY

IMPACTS:



OPPORTUNITIES

NEW WAYS OF LIVING

- SOLUTIONS:**
- CLIMATE-CHANGE FRIENDLY DESIGN OF THE PUBLIC SPACE
 - LIGHTING
 - NO DANGEROUS AREAS
 - FLEXIBLE & VERSATILE SPACES
 - HYBRID BUILDINGS: "Forum", "Think Corner" for all

- BARRIERS:**
- PROPERTY OWNERSHIP AND MAINTENANCE
 - FRAGMENTATION OF OWNERSHIP (FRAGMENTATION)
 - ANONYMOUS PUBLIC SPACE
 - MONEY



TOPIC 2: PLANNING, BUILT ENVIRONMENT & INFRASTRUCTURES

IMPACTS:



OPPORTUNITIES



- SOLUTIONS:**
- CONSTRUCTION REGULATIONS
 - AGRICULTURAL PRACTICES & PLANS
 - STRATEGY FOR THE NATURAL ENVIRONMENT
 - TECHNICAL AND DIGITAL DEVELOPMENT

- BARRIERS:**
- MONEY & RESOURCES
 - ATTITUDES



TOPIC 2: WATER SYSTEMS

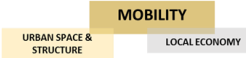


WORKSHOP2 (3,5 HOURS): CO-IDENTIFYING CLIMATE CHANGE IMPACTS & OPPORTUNITIES

MALMI DISTRICT (12+2 PARTICIPANTS)

TOPIC 3: SMART MOBILITY AND LOCAL ECONOMY

IMPACTS:



- SOLUTIONS:**
- FINANCIAL SUPPORT
 - IMPROVED PUBLIC TRANSPORT
 - COMMUTING CULTURE (INCLUDING BYCICLES)
 - MALMI "RIDESHARING"
 - PLANNING
 - ENTREPREUNERSHIP & COOPERATION

OPPORTUNITIES



- BARRIERS:**
- PEOPLE'S ATTITUDES / DESIRE FOR COMFORT / RESISTANCE TO CHANGE
 - WHICH VEHICLES WILL BE DEVELOPED?
 - TECHNOLOGICAL CHANGES MIGHT FRIGHTEN
 - MONEY & FUNDING
 - CLIMATE CHANGE NOT INCLUDED IN THE MALMI VISION



HYYPÄ RIVER VALLEY (14+2 PARTICIPANTS)

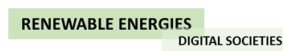
TOPIC 3: ENERGY, PEOPLE & WAYS OF LIVING

IMPACTS:

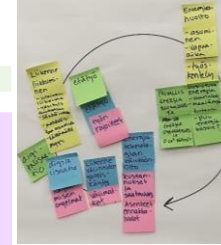


- SOLUTIONS:**
- NEW ENERGY TECHNOLOGIES
 - REMOTE WORK
 - DIGITALIZATION
 - SHARED VEHICLES AND SHARING ECONOMY

OPPORTUNITIES



- BARRIERS:**
- MONEY & RESOURCES
 - ATTITUDES & PREJUDICES
 - LIMITATIONS OF REMOTE WORK, DIGITALIZATION AND SHARED VEHICLES



TOPIC 4: NEW ECONOMIES? INDUSTRY AND SERVICE SECTOR

IMPACTS:



- SOLUTIONS:**
- GREEN ECONOMY
 - COMMUNICATION & MARKETING
 - INNOVATIONS
 - FINANCING GOOD PROJECTS
 - CARBON NEUTRAL HYYPÄRIVER VALLEY

OPPORTUNITIES

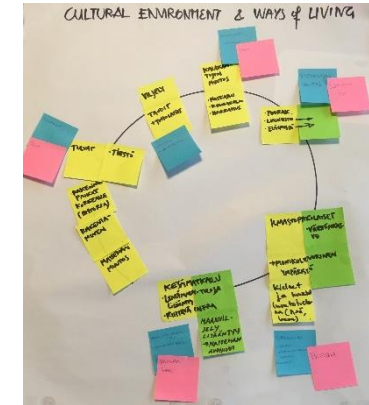


- BARRIERS:**
- MONEY & RESOURCES
 - LACK OF INNOVATION
 - REMOTE LOCATION
 - BUREAUCRACY
 - EGO, FEARS, ENVY (positive or negative?)



TORNIO RIVER VALLEY (20+2 PARTICIPANTS)

TOPIC 3: CULTURAL ENVIRONMENT & WAYS OF LIVING



TOPIC 4: SUSTAINABLE ECONOMY

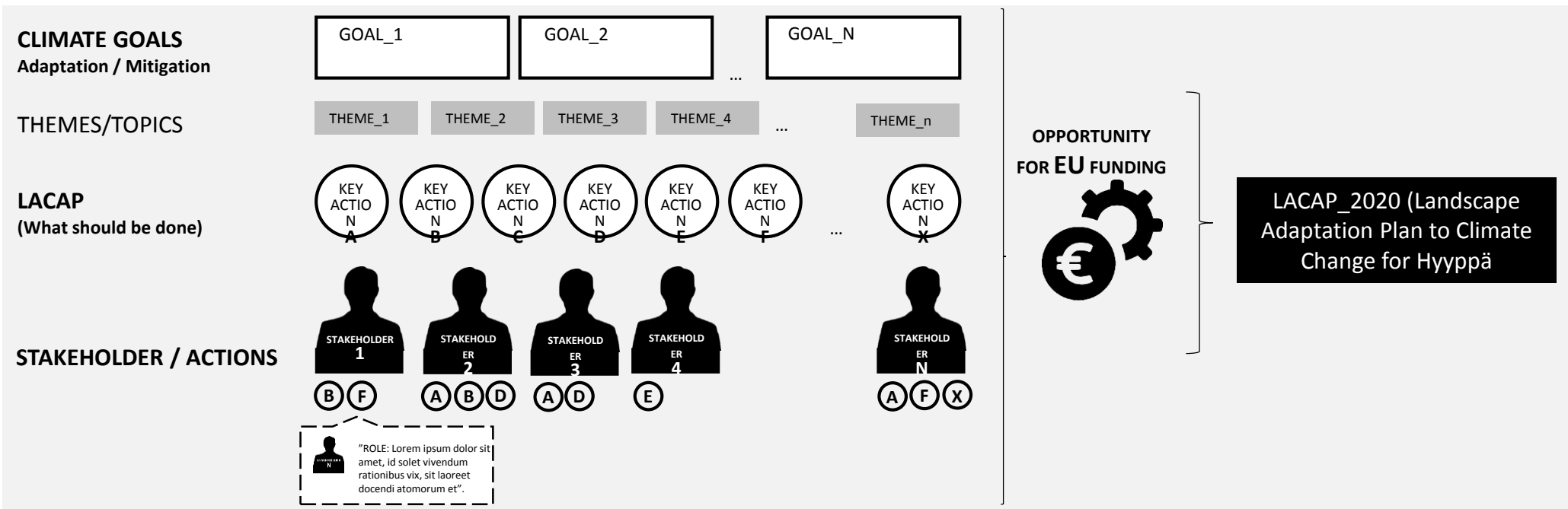
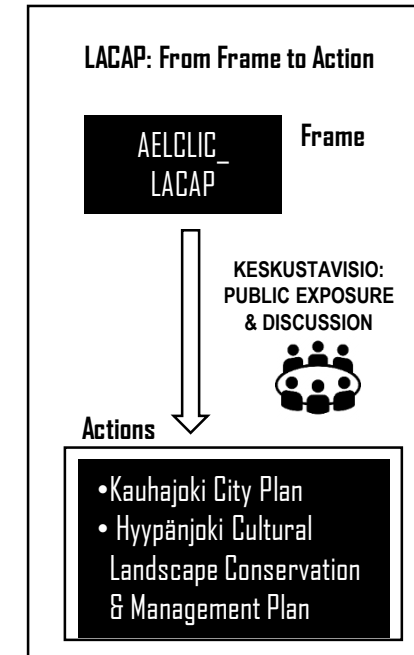


WORKSHOP3 (3,5 HOURS): RE-DEFINING KEY CONTENTS OF A FUTURE LACAP + DECIDING NEXT STEPS

1. RESULTS OF THE WORKSHOP (+ short introduction to the AELCLIC project for the new stakeholders)
2. NEW INPUTS FOR THE WORKSHOP:
 - Towards a Climate-KIC Demonstrator and a LACAP (Landscape Adaptation plan to Climate Change) + Structure of a prototypical STRATEGIC PLAN
 - Key findings and opportunities of the AELCLIC project (see reports from Workshop 1 and 2) in relation to existing local plans + Suggestions for a future LACAP and Demonstrator
3. TEAMWORK (IN MULTISTAKEHOLDER TEAMS)
 - **TASK1: WHAT: Main Values, Key Goals & Themes/Topics (+ some IMPACTS & SOLUTIONS/ACTIONS) for a potential LACAP**
 - **TASK2: Structure of a potential LACAP**
 - **TASK3: HOW: Process, Key phases and schedule TASK3: WHO: Partners: Possible distribution of roles, duties, contributions, etc.**
 - **TASK4: WHO: Critical diagnosis of the existing Local Network and its capacity to promote the development of a Demonstrator application and a LACAP (administrative, financial, social, scientific)**

PROPOSED AGENDA:

1. Welcoming words ([Town of Kauhajoki](#), [ELY/South-Bothnia and Aalto University](#)): 5 minutes
2. Presentation of participants: 5 minutes
3. RESULTS of the WORKSHOP2 ([Aalto University](#)): 15 minutes
4. Presentations & Distribution of materials:
 - a. Towards a Climate-KIC Demonstrator and a LACAP (Landscape Adaptation plan to Climate Change); ([Aalto University](#)): 15-20 minutes
 - i. What can be a LACAP? Examples of other Strategic Plans (Partners & Roles / Topic & Goals / Phases / Schedule / Outputs)
 - ii. Key contents of an application for a Climate-KIC Demonstrator: Table of Contents & Key ideas; possible ways to contribute
 - iii. Letter or Memorandum of Understanding for the AELCLIC_Hyypä
 - b. Key findings and opportunities of the AELCLIC project (see reports from Workshop 1 and 2) in relation to the Kauhajoki Strategic Plans and the **Hyypänjoki Cultural Landscape Conservation & Management Plan** + Suggestions for a future LACAP and Demonstrator (by: [Town of Kauhajoki](#), [ELY/South-Bothnia \(Linda and Marketta\)](#)): 15-20 minutes
5. TEAM WORK
 - a. METHOD: all the participants will discuss and work together on the proposed tasks around a big table with a map of the area, white posters, markers and sticker notes. Aalto University (Juanjo and Kirsi) and Town of Kauhajoki + ELY/South-Bothnia (Linda Leinonen + Marketta Nummijärvi) will facilitate the discussion.
 - b. TASKS (2 hours, 20 minutes approximately per TASK):
 - TASK1: WHAT: Main Values, Key Goals & Themes/Topics (+ some IMPACTS & SOLUTIONS/ACTIONS) for a potential LACAP
 - TASK2: Structure of a potential LACAP
 - TASK3: HOW: Process, Key phases and schedule (e.g. identification and involvement of key stakeholders, analysis and diagnosis of critical issues, development of strategies & plan, definition of pilot actions...)
 - TASK4: WHO: Partners: Possible distribution of roles, duties, contributions, etc.
 - TASK5: Critical diagnosis of the existing Local Network and its capacity to promote the development of a Demonstrator application and a LACAP (administrative, financial, social, scientific)
 - TASK6: Celebrating the end of the AELCLIC_pathfinder in Hyypä
6. SUMMARY and CONCLUSIONS (15-20 minutes)



(this poster will be prepared in advance by Aalto university)

- # TASK1_Synthesis of Goals, Themes, Problems , Solutions

- Role / Contributions / ...?

WORKSHOP3 (3,5 HOURS): RE-DEFINING KEY CONTENTS OF A FUTURE LACAP + DECIDING NEXT STEPS

MALMI DISTRICT_workshop3_29.8.2019



NAME OF CONTACT	INSTITUTION	TYPE OF STAKEHOLDER
Susanna Kankaanpää	Urban Environment Division	LOCAL/REGIONAL ADMINISTRATION
Antti Mentula	Urban Environment Division	LOCAL/REGIONAL ADMINISTRATION
Satu Tarula	Urban Environment Division	LOCAL/REGIONAL ADMINISTRATION
Niina Kylläinen	HSY	LOCAL/REGIONAL ADMINISTRATION
Tiina Anttila-Lehtonen	Urban Environment Division	LOCAL/REGIONAL ADMINISTRATION
Hossam Hewidy	Aalto_Department of Architecture	RESEARCH
Sauli Rouhinen	Viherympäristöliitto	PRIVATE SECTOR
Miimu Airaksinen	Suomen Rakennusinsinöörien Liitto RIL	PRIVATE SECTOR
Sirpa Lamminluoto	Malmi Nova shopping centre/Entrepreneur	PRIVATE SECTOR
Merja Carlandr	Pohjois-Helsingin yrittäjät/Entrepreneur	PRIVATE SECTOR
Maria Laurila	Malmi-seura	SOCIETAL GROUP
Hanna Maidell	Local resident	SOCIETAL GROUP

HYPPA RIVER VALLEY_workshop3_6.9.2019



NAME OF CONTACT	INSTITUTION	TYPE
Marketta Nummijärvi	ELY/South-Bothnia, Seinäjoki	LOCAL/REGIONAL AUTHORITY
Leena Rinkineva-Kantola	ELY/South-Bothnia	LOCAL/REGIONAL AUTHORITY
Juhani Hallasmaa	ELY/South-Bothnia	LOCAL/REGIONAL AUTHORITY
Linda Leinonen	Major Kahajoki town	LOCAL/REGIONAL AUTHORITY
Harri Virtanen	Kauhajoki town	LOCAL/REGIONAL AUTHORITY
Tuomo Varsamäki	Kauhajoki town	LOCAL/REGIONAL AUTHORITY
Timo Lakso	Etelä-Pohjanmaan liitto	LOCAL/REGIONAL AUTHORITY
Niina Tuovinen	Suupohjan peruspalveluliikelaitoskuntayhtymä	PUBLIC SECTOR
Susanna Tyrvalinen	Seinäjoen museot	PUBLIC SECTOR
Sirkka-Liisa Sihvonen	Seinäjoen museot	PUBLIC SECTOR
Tuula Pelttonen	Metsähallitus	PUBLIC SECTOR
Sulevi Riukulehto	Ruralia-instituutti	RESEARCH
Anna Tall	Seinäjoen kaupunki/AMK	RESEARCH
Tapio Kurkikangas	Suomen metsäkeskus	RESEARCH
Janita Mäkelä	Kauhajoen nuorisovaltuusto	SOCIETAL ORGANIZATION
Julia Saarinen	Kauhajoki Youth Council	SOCIETAL ORGANIZATION
Jeremias Laitamäki	Kauhajoki Youth Council	SOCIETAL ORGANIZATION
Merja Rikala	Luonnonsuojelupiiri	SOCIETAL ORGANIZATION
Wilma Kleimola	4H	SOCIETAL ORGANIZATION
Neea Leppälä	4H	SOCIETAL ORGANIZATION
Riikka Asunmaa	Pro Agria	PRIVATE SECTOR
Sami Yli-Rahasto	MTK	PRIVATE SECTOR
Asko Ojala	Farmer, Hyppä village society	PRIVATE SECTOR / SOCIETAL ORGANIZATION
Mikko Rotola-Pukkila	Farmer, Hyppä valley conservation board	PRIVATE SECTOR / SOCIETAL ORGANIZATION
Matti Seppälä	farmer - coming to workshop	PRIVATE SECTOR / SOCIETAL ORGANIZATION
Jussi Parviainen	Metsänhoitoyhdistys LAKEUS	PRIVATE SECTOR
Heidi Hongisto	Kauhajoen Krouvi	PRIVATE SECTOR
Toni Hongisto	Kauhajoen Krouvi	PRIVATE SECTOR
Laura Koivumäki	Geopark	PRIVATE SECTOR
Yrjö Ojanemi	MTK	PRIVATE SECTOR
Erkki Vihonen	Pro Agria	PRIVATE SECTOR

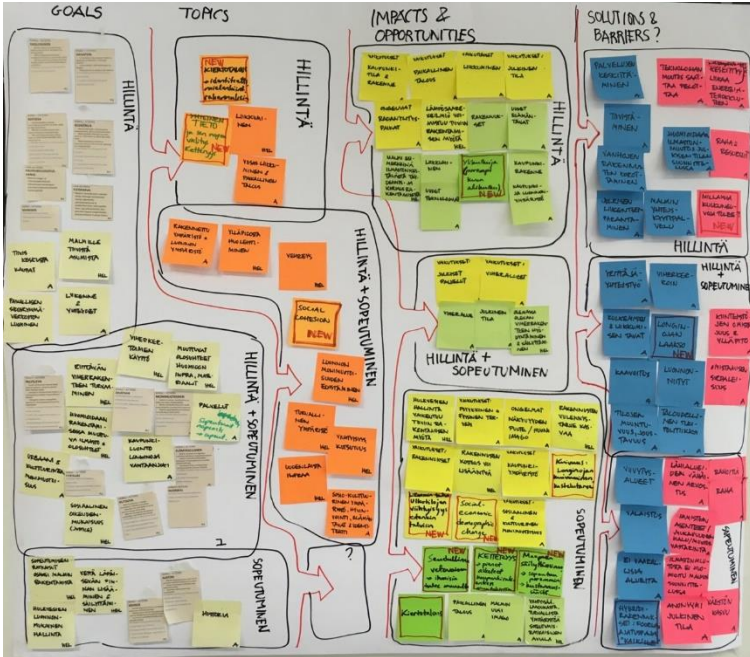
TORNIO RIVER VALLEY_workshop3_8.10.2019

WORKSHOP3 (3,5 HOURS): RE-DEFINING KEY CONTENTS OF A FUTURE LACAP + DECIDING NEXT STEPS

MALMI DISTRICT_workshop3_29.8.2019

HYPPA RIVER VALLEY_workshop3_6.9.2019

TORNIO RIVER VALLEY_workshop3_8.10.2019



DECISION: To incorporate the results of the AELCLIC project in the Malmi Visio. The City of Helsinki will consider the possibility of leading a further funding application

LEAD INSTITUTION: City of Helsinki



DECISION: To study potential funding applications to elaborate a LACAP or to advance in the developed works

LEAD INSTITUTION: TOWN of KAUHAJOKI

UUTiset 15

SARJAPILTTARI HEIKKA

Aalto-yliopiston järjestämässä ensimmäisessä työpajassa tuli ilmi, että Tornionjokilaaksoa ajava arvostettu Kulkokotkonkeus ja viikkotähti Tornionjoen maisemik.

Aalto-yliopiston professori Juuso Galan johtaa Euroopan kattavaa Aalto-imastotyöpajaa.

Aalto-yliopiston opiskelijat ja opettajat keskustelussa.

Aalto-yliopiston opiskelijat ja opettajat keskustelussa.

UUTiset 15

SARJAPILTTARI HEIKKA

Aalto-yliopiston järjestämässä ensimmäisessä työpajassa tuli ilmi, että Tornionjokilaaksoa ajava arvostettu Kulkokotkonkeus ja viikkotähti Tornionjoen maisemik.

Aalto-yliopiston professori Juuso Galan johtaa Euroopan kattavaa Aalto-imastotyöpajaa.

Aalto-yliopiston opiskelijat ja opettajat keskustelussa.

Aalto-yliopiston opiskelijat ja opettajat keskustelussa.

Uutiset A11

Markketa Nummijärvi, Juuso Galan ja Kirsi Huri-Weintraub ovat pohtineet työpajassa kauhaajan hyppynjokilaaksoa sopeuttamista ilmastomuutokseen. Kuvat Aune Waronen

Markketa Nummijärvi, Juuso Galan ja Kirsi Huri-Weintraub ovat pohtineet työpajassa kauhaajan hyppynjokilaaksoa sopeuttamista ilmastomuutokseen. Kuvat Aune Waronen

Markketa Nummijärvi, Juuso Galan ja Kirsi Huri-Weintraub ovat pohtineet työpajassa kauhaajan hyppynjokilaaksoa sopeuttamista ilmastomuutokseen. Kuvat Aune Waronen

Uutiset A11

Markketa Nummijärvi, Juuso Galan ja Kirsi Huri-Weintraub ovat pohtineet työpajassa kauhaajan hyppynjokilaaksoa sopeuttamista ilmastomuutokseen. Kuvat Aune Waronen

Markketa Nummijärvi, Juuso Galan ja Kirsi Huri-Weintraub ovat pohtineet työpajassa kauhaajan hyppynjokilaaksoa sopeuttamista ilmastomuutokseen. Kuvat Aune Waronen

A?

Study at Aalto Research & Art People Collaboration Aalto University Services

News

Promoting climate change adaptation in Europe from the local level

Published: 23.9.2019

Aalto University is leading a European project aiming to find ways to adapt to climate change. The focus is in mobilizing society by creating local networks.

Map of Europe showing the project area.

Aalto University

Team & Goals Research Education News & Events Contact & Blog

news

Aalto University logo.

Adaptation of European Landscapes to Climate Change project (AELCLIC) funded by the EU's Climate-KIC programme – In a Nutshell.

Aalto University is leading a European project aiming to find ways to adapt to climate change. The focus is in mobilizing society by creating local networks. AELCLIC works as a multiplier and local network activator: as a tool to let local people internalize what climate change can mean for them, and to start being active partners in the development of solutions. To know more about the adaptation plans for connecting to broader visions and multiplier effect of the project, please follow the news published in the Aalto's webpage [here](#)

POHJALAINEN

Summitina 8. syyskuuta 2019

Markketa Nummijärvi, Juuso Galan ja Kirsi Huri-Weintraub ovat pohtineet työpajassa kauhaajan hyppynjokilaaksoa sopeuttamista ilmastomuutokseen. Kuvat Aune Waronen

Markketa Nummijärvi, Juuso Galan ja Kirsi Huri-Weintraub ovat pohtineet työpajassa kauhaajan hyppynjokilaaksoa sopeuttamista ilmastomuutokseen. Kuvat Aune Waronen

Markketa Nummijärvi, Juuso Galan ja Kirsi Huri-Weintraub ovat pohtineet työpajassa kauhaajan hyppynjokilaaksoa sopeuttamista ilmastomuutokseen. Kuvat Aune Waronen

Ilmasto tarvitsee maaseutua

Kauhaajan hyppynjokilaakso on ollut keuhkiksi saakka maan pöyhäntä, jossa on pohdittu ilmastomuutoksen vaikutusta maaseutuun ja erityisesti uuteen viikkotähti Tornionjoen maisemik.

Kotona Kauhaajan työpajassa ei ole ollut maaseutua, vaan ilmastomuutoksen vaikutusta maaseutuun ja erityisesti uuteen viikkotähti Tornionjoen maisemik.

Kotona Kauhaajan työpajassa ei ole ollut maaseutua, vaan ilmastomuutoksen vaikutusta maaseutuun ja erityisesti uuteen viikkotähti Tornionjoen maisemik.

Kotona Kauhaajan työpajassa ei ole ollut maaseutua, vaan ilmastomuutoksen vaikutusta maaseutuun ja erityisesti uuteen viikkotähti Tornionjoen maisemik.

TOPIC2: Final Agreements in Local Networks + Joint Final Deliverables (to be discussed in the International Workshop3 (Bologna))

1) Next steps in Local networks

2) TRANSVERSAL DELIVERABLES (November –December 2019)

- DEL 5: New and Transversal findings after studying the works developed in all the Pilot Landscapes. Coordination: University of Bologna**
- DEL 6: Guidelines for the conformation of Local Networks for Climate Change Adaptation in Europe. Coordination: Wageningen University**
- DEL 9: Scientific Article1 (Aligning agendas for multi-stakeholder local networks for Climate Change Adaptation). Coordination: Aalto U.**
- DEL 10: Scientific Article 2 (Setting Local networks for Climate Change Adaptation in Europe: Challenges, Methods, Suggestions). Wageningen University.**

TOPIC3: Final Seminar of the AELCLIC project in Bologna (November 2019) + International Workshop3

INTERNATIONAL MEETING BOLOGNA

WHO: Partners / Third Parties /Representatives of Local Networks (1 per network)/Representatives of Climate CLIK

We can pay the travel and accommodation costs for the local representatives up to 500 euros per person)

WHAT FOR?: Discuss results in different Pilot Landscapes / Initiate the production of Transversal Outputs / Generate Alliances for future Funding applications, within the AELCLIC project or with other networks (e.g. SATURN project) or organizations

PLACE: Bologna

DATE: 13th of November (whole day)

PARTICIPANTS: 1 representative from each AELCLIC PARTNER (9), 1 representative from each LOCAL NETWORK (12-16), 1 representative from active THIRD PARTIES (approx. 8), representatives from CLIMATE-KIC (2-3?), representatives from Comune di Bologna

TENTATIVE AGENDA

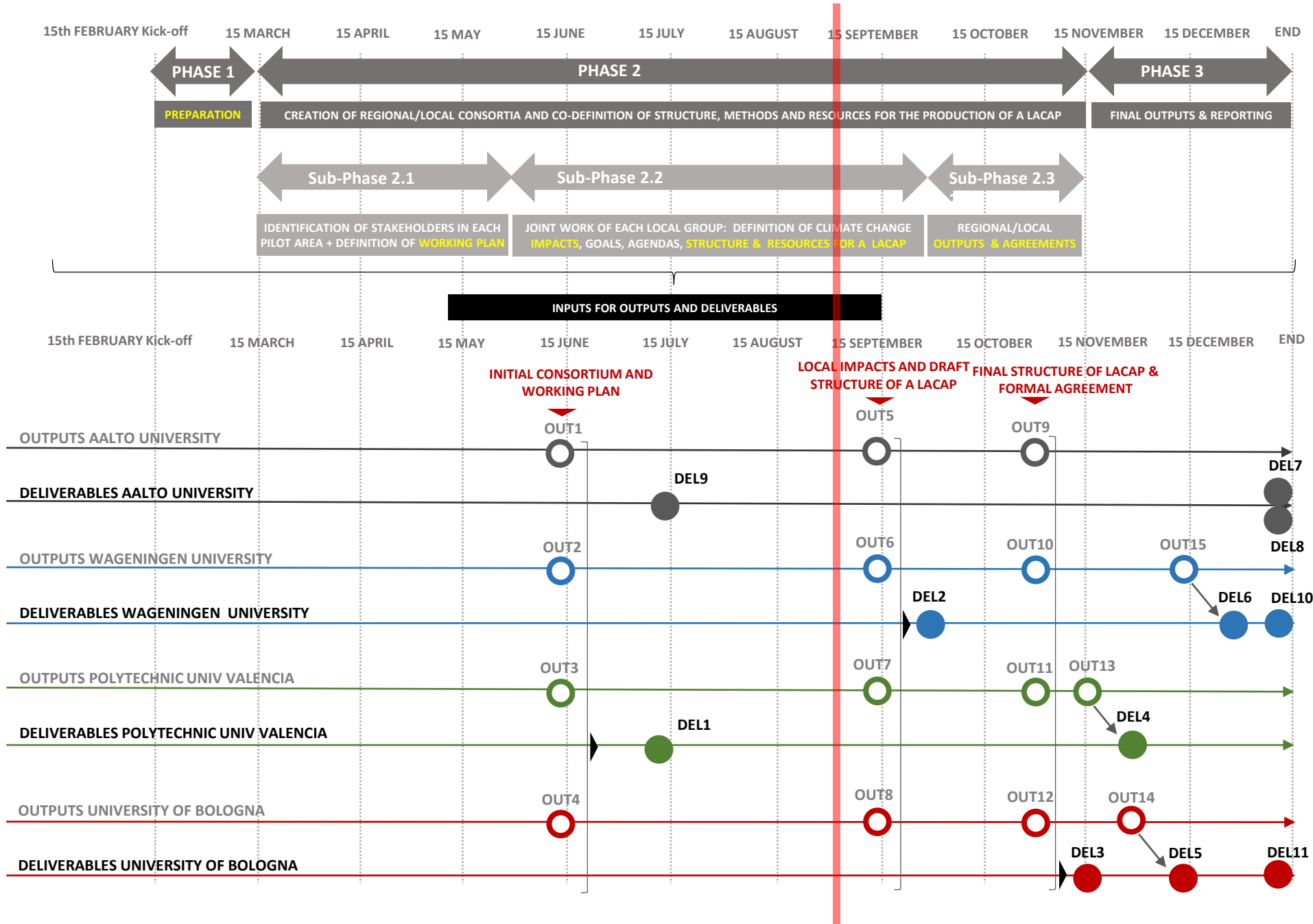
- Welcoming words and presentation of participants
- General Summary of the AELCLIC pathfinder and its GEOGRAPHICAL REGIONS (by Aalto, UNIBO, UPV, WUR)
- Inputs from the AELCLIC_LOCAL NETWORKS: conclusions, future expectations, questions, etc (by the leading partners of each LOCAL NETWORK). Including Coffee Break
- Inputs from CLIMATE-KIC: How to move towards a Demonstrator (by 1-3 representatives of CLIMATE KIC (Nordic (Marco), Italy, Netherlands))
- LUNCH
- Open Discussion (AELCLIC / LOCAL NETWORKS / CLIMATE-KIC)
- WORKSHOP: Transversal Findings / Production of Transversal Outputs / Organizing future steps for the production of applications for Demonstrators (AELCLIC PARTNERS: moving from leaders to facilitators..)
- Closing words

We will need to define then the criteria to create the groups (this can be discussed in the Skype meeting 26.9.2019):

- OPTION1: Potential to conform a Consortium for a future funding application (e.g. Climate-KIC Demonstrator)?... In that case we can divide the local networks in urban/ rural, etc.: AELCLIC URBAN / AELCLIC RURAL or AELCLIC LACAPS / AELCLIC PILOTS... (more alternatives are welcome)
- OPTION2: Key issues for advancing towards a funding application: Here each group can explore different funding programmes and present to the whole group their findings at the end of the session

Budget and Administrative Issues

LOGIC MODEL_AELCLIC PATHFINDER_SCHEDULE FOR THE FINALIZATION OF OUTPUTS AND DELIVERABLES



- OUT1 CONSORTIUMS AND WORKING PLANS FOR EACH PILOT LANDSCAPE IN NORTHERN EUROPE
- OUT2 CONSORTIUMS AND WORKING PLANS FOR EACH PILOT LANDSCAPE IN ATLANTIC AND ALPINE EUROPE
- OUT3 CONSORTIUMS AND WORKING PLANS FOR EACH PILOT LANDSCAPE IN SOUTH-WESTERN EUROPE
- OUT4 CONSORTIUMS AND WORKING PLANS FOR EACH PILOT LANDSCAPE IN SOUTH-EASTERN EUROPE
- OUT5 DRAFT STRUCTURE AND IMPLEMENTATION PLAN FOR A FUTURE LACAP (PER CONSORTIUM & PILOT) IN NORTHERN EUROPE
- OUT6 DRAFT STRUCTURE AND IMPLEMENTATION PLAN FOR A LACAP (PER CONSORTIUM & PILOT) IN ATLANTIC AND ALPINE EUROPE
- OUT7 DRAFT STRUCTURE AND IMPLEMENTATION PLAN FOR A FUTURE LACAP (PER CONSORTIUM & PILOT) IN SOUTH-WESTERN EUROPE
- OUT8 DRAFT STRUCTURE AND IMPLEMENTATION PLAN FOR FUTURE LACAP (PER CONSORTIUM & PILOT) IN SOUTH-EASTERN EUROPE
- OUT9 FINAL STRUCTURE AND IMPLEMENTATION PLAN FOR A FUTURE LACAP (PER CONSORTIUM & PILOT LANDSCAPE) IN NORTHERN EUROPE
- OUT10 FINAL STRUCTURE AND IMPLEMENTATION PLAN FOR A FUTURE LACAP (PER CONSORTIUM & PILOT LANDSCAPE) IN ATLANTIC AND ALPINE EUROPE
- OUT11 FINAL STRUCTURE AND IMPLEMENTATION PLAN FOR A FUTURE LACAP (PER CONSORTIUM & PILOT LANDSCAPE) IN SOUTH-WESTERN EUROPE
- OUT12 FINAL STRUCTURE AND IMPLEMENTATION PLAN FOR A FUTURE LACAP (PER CONSORTIUM & PILOT LANDSCAPE) IN SOUTH-EASTERN EUROPE
- OUT13 COMPILATION OF FINAL PARTIAL OUTPUTS OUT1-OUT12
- OUT14 NEW FINDINGS PRODUCED AFTER THE JOINT AND CRITICAL ANALYSIS OF THE FINAL RESULTS IN EACH PILOT LANDSCAPE AND IN THE WHOLE NETWORK
- OUT15 GUIDELINES FOR THE CONSTITUTIONS OF REGIONAL/LOCAL CONSORTIUMS FOR THE DEFINITION OF LANDSCAPE-CLIMATE CHANGE ADAPTATION PLANS
- DEL1 EDITED AND IMPROVED COMPILATION OF PARTIAL OUTCOMES FROM THE DIFFERENT GEOGRAPHICAL ZONES (OUT1, 2, 3 AND 4)
- DEL2 EDITED AND IMPROVED COMPILATION OF PARTIAL OUTCOMES FROM THE DIFFERENT GEOGRAPHICAL ZONES (OUT5, 6, 7 AND 8)
- DEL3 EDITED AND IMPROVED COMPILATION OF PARTIAL OUTCOMES FROM THE DIFFERENT GEOGRAPHICAL ZONES (OUT9, 10, 11 AND 12)
- DEL4 EDITED AND IMPROVED COMPILATION OF FINAL PARTIAL DELIVERABLES (DEL1+DEL2+DEL3)
- DEL5 EDITED AND IMPROVED PRESENTATION OF THE NEW FINDINGS PRODUCED AFTER THE JOINT AND CRITICAL ANALYSIS OF THE FINAL RESULTS IN EACH PILOT LANDSCAPE AND IN THE WHOLE NETWORK
- DEL6 FINAL GUIDELINES FOR THE CONSTITUTIONS OF REGIONAL/LOCAL CONSORTIUMS FOR THE DEFINITION OF LANDSCAPE-CLIMATE CHANGE ADAPTATION PLANS
- DEL7 CLIMATE-KIC REPORTS (PERFORMANCE REPORT, FINANCIAL REPORT, ETC.)
- DEL8 WEB WITH ALL THE DELIVERABLES
- DEL9 SCIENTIFIC ARTICLE OR CONFERENCE PAPER: IDENTIFYING AND ALIGNING AGENDAS FOR MULTI-STAKEHOLDER CONSORTIA ON CLIMATE CHANGE ADAPTATION & MITIGATION
- DEL10 SCIENTIFIC ARTICLE OR CONFERENCE PAPER: SETTING MULTI-STAKEHOLDER CONSORTIA ON CLIMATE CHANGE ADAPTATION & MITIGATION: MODELS FROM THE AELCLIC PROJECT
- DEL11 SIGNED AGREEMENTS FOR A JOINT COMMITMENT OF PARTNERS IN THE ESTABLISHED LOCAL CONSORTIA

Please include here your estimated costs until the end of the project (considering all the implemented and expected workshops and your personal participation in the final meeting in Bologna). Remember that the WP4 includes the budget of Las Naves and the WP5 the budget of FIU				
	Other Goods and Services	Personnel Costs	Travel and Subsistance for the AELCLIC_partners (universities and our partner cities/regions)	
WP1 (Aalto)_EXPECTED	1 500,00 €	2 000,00 €		
WP1 (Aalto)_ALLOWED	1 500,00 €	2 000,00 €		
WP1 (Aalto)_BALANCE	0,00 €	0,00 €	0,00 €	
WP2 (Aalto)_EXPECTED	2 000,00 €	15 015,00 €	4 500,00 €	
WP2 (Aalto)_ALLOWED	4 000,00 €	15 015,00 €	6 485,00 €	
WP2 (Aalto)_BALANCE	2 000,00 €	0,00 €	1 985,00 €	
WP3 (WUR)_EXPECTED	1 000,00 €	19 000,00 €	5 000,00 €	
WP3 (WUR)_ALLOWED	4 500,00 €	19 000,00 €	6 000,00 €	
WP3 (WUR)_BALANCE	3 500,00 €	0,00 €	1 000,00 €	
WP4 (UPV)_EXPECTED	1 555,33 €	10 500,00 €	4 611,00 €	
WP4 (UPV)_ALLOWED	5 000,00 €	10 500,00 €	4 500,00 €	
WP4 (UPV)_BALANCE	3 444,67 €	0,00 €	-111,00 €	
WP5 (UNIBO)_BALANCE	2 485,00 €	6 525,00 €	3 505,00 €	
WP5 (UNIBO)_ALLOWED	4 500,00 €	11 900,00 €	5 100,00 €	
WP5 (UNIBO)_BALANCE	2 015,00 €	5 375,00 €	1 595,00 €	
OVERALL BALANCE	10 959,67 €	5 375,00 €	4 469,00 €	20 803,67 €

If we allocate 12,000 euros for the organization of the International Meeting in Bologna (13.10.2019), we should explore other alternatives to spend the surplus (e.g publihing and printing disseminating materials)

CONCLUSIONS:

A) LEVEL OF IMPLEMENTATION OF THE PROJECT (26.9.2019):

- **Coordination & Dissemination (WP1):** The implemented activities and the composition of the local networks are already reported and visible in the webpage of the project. Regarding the budget, We are expecting to have a surplus of 20,000€. This will allow us to organize the International Workshop in Bologna (13.11.2019) and cover the travel and accommodation expenses to non-academic partners, active Third Parties and representatives/leaders of the configured Local Networks (500€/person approx.).
- **Northern Europe (WP2):** Most of the planned workshops have been already implemented and reported. The Tonder Pilot Landscape was cancelled due to the difficulty to get local support. The conformed local networks have preferred not to produce an official letter of joint commitment but they are all interested in continuing the initiated work and need to discuss internally and with the AELCLIC project how to move forward. It has been crucial to align the AELCLIC_pathfinder with other local or regional plan. The AELCLIC project is receiving increasing coverage by media.
- **Atlantic and Alpine Europe (WP3):** The Tarentaise Valley pilot landscape has been activated and there are two workshop programmed. The second workshop in the Bertra Dune system is also and the report of the first workshop just needs some additions. The complexity of the Leading Pilot Landscape in the Netherlands is making difficult its activation.
- **South Western Europe (WP4):** Due to the difficulties to activate the Multiplier Pilot landscapes in Vila do Conde (Portugal), Tenerife (Canary Islands, Spain) and Priorat/Penedes (Catalonia, Spain), 4 new multipliers have been defined and already activated in the River Besòs (Metropolitan Area of Barcelona), Torrevieja, Serres d'Ancosa and Alt Pirineu Natural Park. These multipliers will offer a regional/urban pilot with the possibility to consider climate changes issues in new urban areas (River Besòs), a prototypical touristic area surrounded by environmental and cultural values (Torrevieja), a terraced agricultural landscape (Serres d'Ancosa) and an alpine landscape in the Pyrenees mountains.
- **South Eastern Europe (WP5):** Most of the planned workshops have been already implemented and reported. A last wrap-up activity might be organized in Mantova. The organization of a second workshop in Bucharest will depend on the implication of the City of Bucharest. The organization of a second workshop in Sicily is facing some organizational challenges.

B) INTERNATIONAL MEETING (13.11.2019, Bologna)

The International Meeting will take place on the 13th of November in Bologna according to the following agenda:

1. Welcoming words and presentation of participants
2. General Summary of the AELCLIC pathfinder and its GEOGRAPHICAL REGIONS (by Aalto, UNIBO, UPV, WUR)
3. Inputs from the AELCLIC_LOCAL NETWORKS: conclusions, future expectations, questions, etc (by the leading partners of each LOCAL NETWORK) + Inputs from CLIMATE-KIC: How to move towards a Demonstrator (by 1-3 representatives of CLIMATE KIC)

LUNCH

4. Open Discussion (AELCLIC / LOCAL NETWORKS / CLIMATE-KIC)
5. WORKSHOP: Transversal Findings / Organizing future steps for the production of new funding applications (AELCLIC PARTNERS: moving from leaders to facilitators..., detecting common interests between local networks and generating new alliances)... AELCLIC URBAN / AELCLIC RURAL or AELCLIC LACAPS / AELCLIC PILOTS...
6. Closing words

The Academic partners will continue working on the 14th of November on the transversal findings and outcomes of the AELCLIC_Pathfinder

Regarding the point 5 of the agenda, **the Academic partners are also welcome to propose other criteria to define potential Demonstrator projects** (define those criteria according to the common interests, expectations or situations detected in the 14-16 Local Networks during the workshops (**read reports**))

All the Work Package Coordinators should prepare **urgently** a list of the representatives of Third parties and Local Networks that should be invited to the International Meeting and send that list (Name, position and email) to Juanjo

The Travel and Accommodation costs of the people invited to the International Meeting will be paid from the budgets of the WP2, WP3, WP4 and WP5 (500€ max). This expense will be distributed according to the expected surpluses in each WP. Remember that only the partners with an assigned budget can buy the flight tickets or pay the accommodation costs for the guests and that these guests will participate as external experts.

C) FINAL AGREEMENTS IN LOCAL NETWORKS + PRODUCTION OF JOINT FINAL DELIVERABLES

C.1. Final Agreements:

Local networks are proposing different ways to formalize their commitment in Climate Change Adaptation, and eventually, to commit themselves in new funding applications. These differences might have a cultural and socioeconomic origin, although they can also be the consequence of the type of activities and facilitation processes that have been used in each Pilot Landscape or regional area of the AELCLIC project. Thus, in Northern Europe, the local networks are very satisfied with the produced results but want to discuss internally how to proceed now whereas in Southern Europe, the local networks expressed from the very beginning their final interest in preparing new and bigger funding applications. In the WP3, WP4 and WP5 areas the idea of producing a flexible but concrete “Letter of Commitment” remains whereas in WP2, this commitment is considered to be implicit in the participation on the workshops.

C.1. New Joint Deliverables:

- It is decided to initiate the definition of the structure and key components of the final deliverables of the AELCLIC Pathfinder. These final deliverable will include some “Transversal findings regarding the generation of Local Networks for Climate Change Adaptation” and some “Guidelines for the generation of Local Networks for Climate Change Adaptation”. In both cases, the documents will be highly based in the critical analysis and comparison of the results produced in the AELCLIC Pilot landscapes (see reports) and will consider the different methods and factors that might have affected the conformation of local networks, the development of the planned activities and the production of outputs (economic, cultural and environmental conditions, type of facilitating processes, characteristics and modes of operation of the regional AELCLIC team, etc.)
- The list below displays the expected Joint Final Deliverables and the responsible partners. Since the “Guidelines” (coordinated by WUR) will need to incorporate the “Transversal Findings” (coordinated by UNIBO) it is agreed to keep all the academic partners of the AELCLIC project informed of the advances in these different works. It will be equality important to start working now in general and flexible ideas, keeping in mind that they will be discussed in the International Meeting of Bologna with all the partners and local representatives (13.11.2019) and the in International Workshop that will be attended only by the Academic partners in Bologna (14.11.2019)
- LIST OF TRANSVERSAL DELIVERABLES
 - DELIVERABLE 5: ***New and Transversal findings after studying the works developed in all the Pilot Landscapes***. Coordination: University of Bologna. **Start now but keep the document open in order to consider all the reports from all the pilot landscapes**
 - DELIVERABLE 6: ***Guidelines for the conformation of Local Networks for Climate Change Adaptation in Europe***. Coordination: Wageningen University. **Start now but keep the document open in order to consider the contents of the DELIVERABLE 5 and the reports from all the pilot landscapes**
 - DELIVERABLE 9: ***Scientific Article1*** (Aligning agendas for multi-stakeholder local networks for Climate Change Adaptation). Coordination: Aalto U.
 - DELIVERABLE 10: ***Scientific Article 2*** (Setting Local networks for Climate Change Adaptation in Europe: Challenges, Methods, Suggestions). Wageningen University.

Juanjo Galan (Aalto University), Helsinki, 27.9.2019