

ACTIVITY: Workshop 1

PLACE: Croagh Patrick Visitor Centre

ORGANIZERS:

Liam Carr & Kevin Lynch / National University of Ireland Galway (NUI Galway)

David Mellett / Climate Action Regional Office (CARO)

PARTICIPANTS:

Murrisk Development Association / Non-affiliated local residents / NUI Galway / CARO / National Parks and Wildlife Service

KEY OBJECTIVES OF THE ACTIVITY:

The purpose of this scoping workshop was: 1) to bring Bertra community members together with other stakeholders; 2) to discuss visions for Bertra Beach and, more broadly, Clew Bay; 3) to identify various possible opportunities as well as challenges.

STRUCTURE:

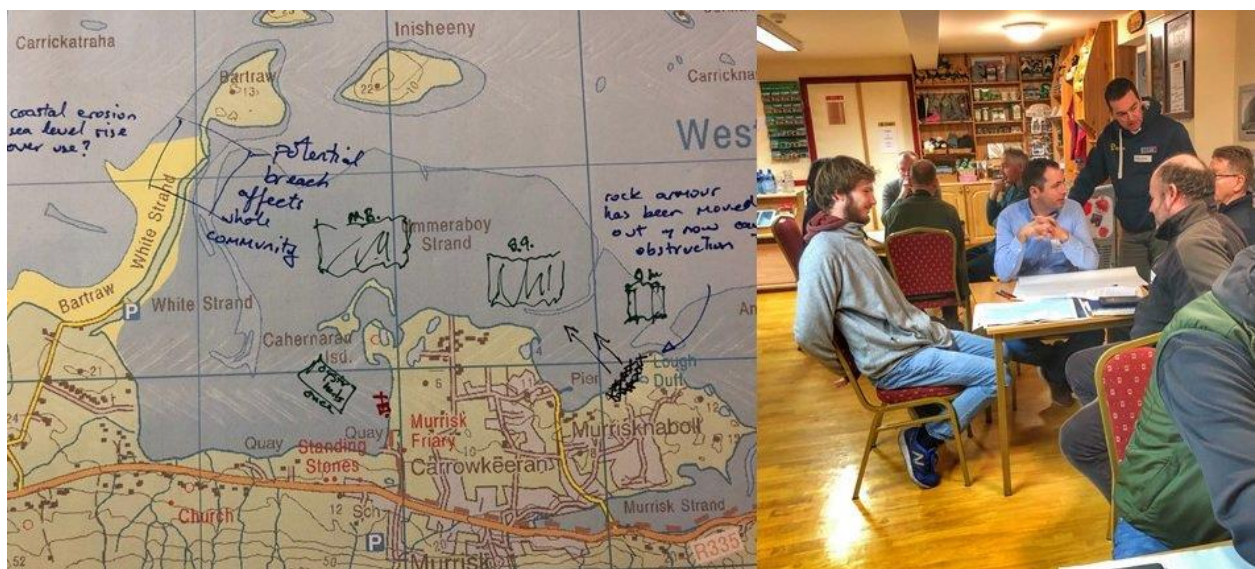
The workshop consisted of a series of facilitated “meeting tables” where participants were encouraged to share their thoughts on a number of linked themes. Representatives from NUI Galway facilitated each table, allowing participants (a mix of stakeholder groups at each table) to engage on the subject matter as they saw fit. The themes discussed were:

Clew Bay Area

- What do you like about the area? / Why do you like living or working in the area? / What makes the area special?

Long-Term Vision for Clew Bay and Bertra

- What will the Clew Bay area will look like 10-years' time? What *should* it look like?
- How might it be used? How might it be managed?
- How might your vision for Clew Bay area affect Bertra's future?

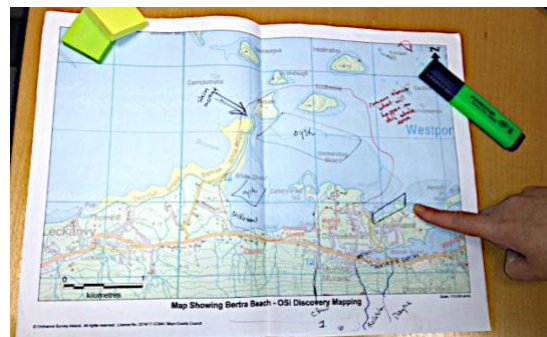


Challenges to the hopes and expectations for the future

- How might threats from the natural environment affect Bertra / Clew Bay?
- In what way might economic issues be important to Bertra / Clew Bay?
- What social & cultural issues may be relevant to the area's future?
- Are there any other issues that might affect Bertra / Clew Bay future?

Human and other resource needs for ensuring Bertra's and Clew Bay's communities and environment are healthy and prosperous in the future

- What resources are necessary for achieving your vision(s)?
- What opportunities are there to fund your ideas?
- How should your vision(s) be funded?
- What are the necessary partnerships for achieving your vision?
 - Which stakeholders are currently active and helpful?
 - Which stakeholders are currently not active, but should be?
 - (or active but maybe not as effective as they could be)



SUMMARY:

The discussion of each topic is summarised below using a *wordle*. The larger words are those that were used most frequently in the conversations across the four tables. The workshop and the points it raised should be considered another layer in the information/knowledge contributing to the process, rather than being statistically representative of the views of all the local communities and stakeholders.

Landscape value:



ACTIVITY: Workshop 2

DATE and TIME: May 2019

PLACE: Clew Bay Hotel Westport

ORGANIZERS:

Liam Carr & Kevin Lynch / National University of Ireland Galway (NUI Galway)

David Mellett / Climate Action Regional Office (CARO)

PARTICIPANTS:

Murrisk Development Association / Non-affiliated local residents / NUI Galway / CARO / National Parks and Wildlife Service

KEY OBJECTIVES AND STRUCTURE:

This workshop had a broad scope, looking at the marine side of the pilot landscape site. It consisted of a talk on aspects of Marine Spatial Planning (MSP) for the area, followed by informal discussion of the issues in light of climate change. It was primarily run by the students and staff of NUI Galway's MSc in Coastal & Marine Environments. It extended the stakeholders engaged in the work, including a local sailing club, outdoor activity centre and aquaculture operations.

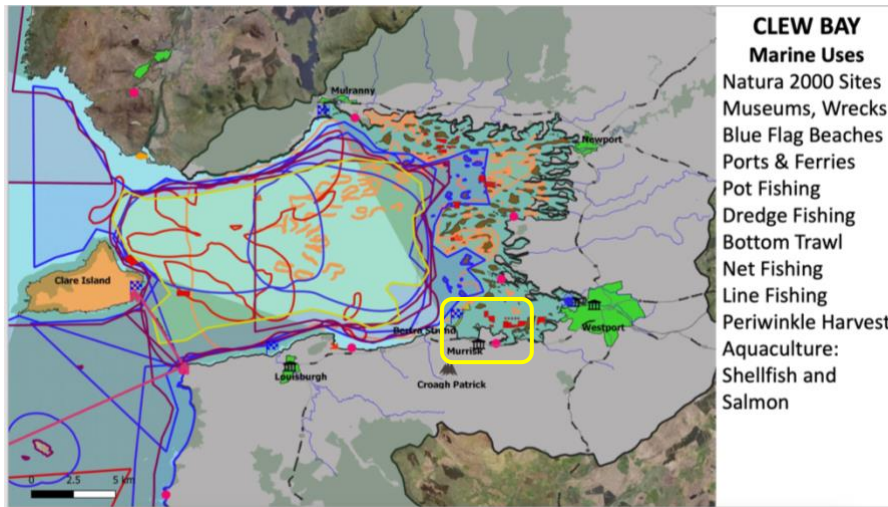
The stated objectives were to learn from stakeholders what they think regarding Clew Bay and its positive attributes? Where they see potential for economic growth? Where they would like to see further environmental conservation efforts? How you would like to see Clew Bay managed in the future, giving regard to climate change effects?

SAMPLES SLIDES FORM THE TALK:

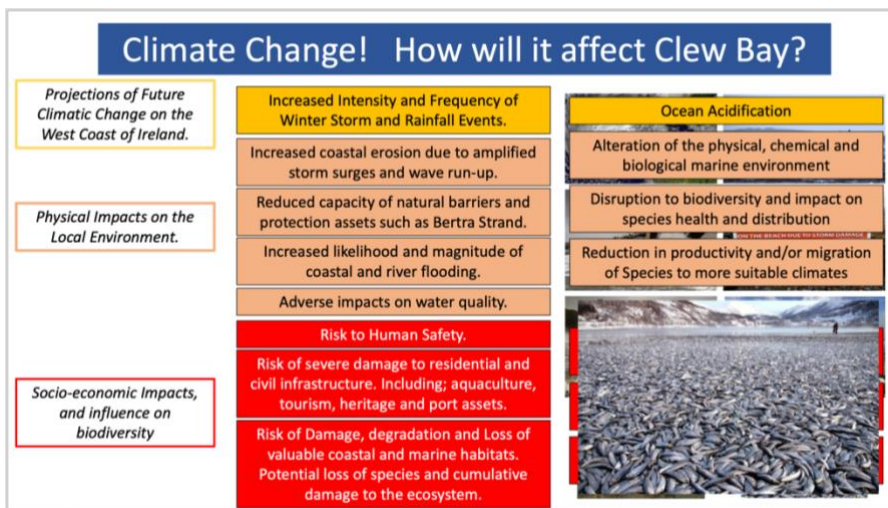
The interaction between climate action, MSP and terrestrial planning:



The complex overlapping activities that take place in the bay, with land-sea interactions an important aspect. The study site for the AELCLIC project is marked with a yellow box.



The projected climate change effects for Clew Bay.



The cover slide for the talk.

